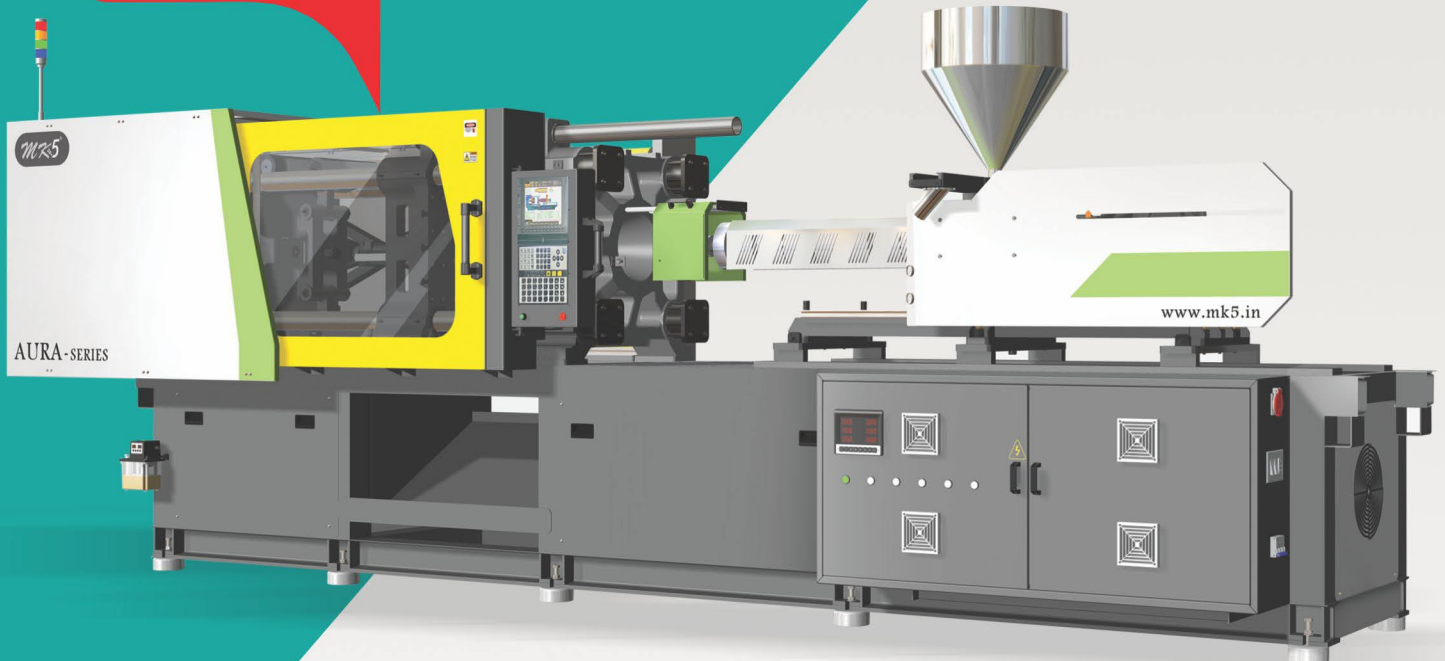




www.mk5.in

**Excellence...** in **technology** and **quality**

**Aura**  
SERIES  
90-275 Ton



Horizontal **Toggle Injection** Moulding Machine

Mfg. by:  
**KASHYAP**  
— INDUSTRIES —

w w w . m k 5 . i n



the **revolution** continues

SINCE 2005



## Company Profile

Kashyap Industries entered the Indian market in the year 2005. With our headquarters in Ahmedabad, Gujarat, we have spread our wings since we entered and become a trusted name in the Plastic Injection Moulding Machines industry.

Our state of the art facility is spread over a large area and fully equipped to manufacture a wide range of machines. These machines are sold under our Brand Name 'MK5'. Here we not only manufacture but also design, research and test the machines for various parameters like performance, safety, speed, energy consumptions and so on.

As the leading Plastic Injection Moulding Machine Manufacturer, we source the best materials to build highly efficient plastic moulding machines. Our machines are mainly used in automotive, mechanical, food and beverages, aerospace and other industries. Due to their application, these machines are built to be rugged, robust and durable even when used constantly.

We use the latest technology to operate our machines making them the most energy efficient and fully automatic high speed machines. A dedicated team of engineers and researchers are constantly working to improvise the machines and make them future ready. With optimum performance and unmatched durability, MK5 has created a space for itself in the Indian market. With a fair share of international clients, we envision to change the way how plastic parts are delivered and manufactured. We desire to make our unparalleled quality and pricing available to clients around the world becoming a global brand.



**400+**  
CLIENT BASE



**50+**  
STAFF



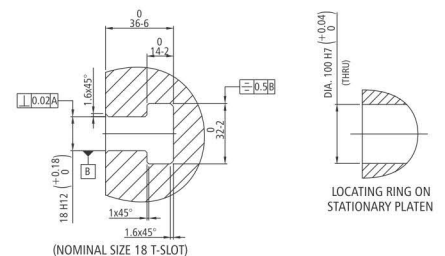
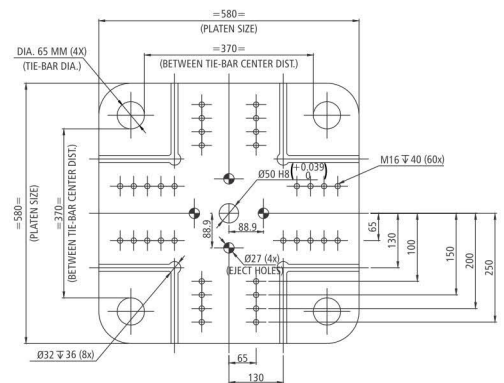
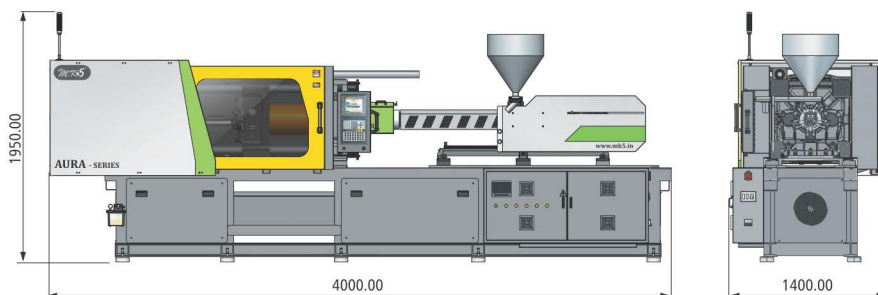
**20+**  
PRODUCTS

## TECHNICAL SPECIFICATION

INJECTION UNIT		AS-80			AS-90		
		A	B	C	A	B	C
INJECTION CAPACITY MAX. (GPPS)	GMS	102	139	181	174	215	272
THEORETICAL DISPLACEMENT	CC	105	132	180	183	226	286
INJECTION PRESSURE MAX.	BAR	2074	1639	1204	2450	2041	1613
INJECTION RATE	CC / SEC	90	114	155	109	134	170
INJECTION SCREW STROKE	MM	130	130	130	180	180	180
SCREW DIAMETER	MM	30	35	40	35	40	45
SCRE L/D RATIO		23.9	20.5	18	23.5	20.5	18.3
SCREW SPEED	RPM	280	280	280	270	270	270
SCREW TORQUE	NM	665			876		
PLASTICIZING RATE (GPPS)	GM / SEC	14	19	19	13	17	24
NO. OF PYROMETERS (BARREL+NOZZLE)		4+1			4+1		
TOTAL HEAT CAPACITY	KW	9.5			9.5		

CLAMP UNIT			
CLAMP FORCE	TON	90	
CLAMP STROKE	MM	330	
MAXIMUM DAYLIGHT	MM	710	
MINIMUM MOULD HEIGHT	MM	150	
MAXIMUM MOULD HEIGHT	MM	400	
PLATEN SIZE (H X V)	MM	565 X 565	
DISTANCE BETWEEN TIE ROD	MM	370 X 370	
TIE ROD DIAMETER	MM	65	
EJECTOR STROKER	MM	110	
EJECTOR FORCE	TON	3.4	
MOULD WEIGHT CAPACITY (STATE./MOVING)	KG	231/462	

GENERAL			
ELECTRIC MOTOR	KW	15	
TOTAL OIL CAPACITY	LTR.	160	
WATER REQUIREMENT (INLET TEMP.29 C)	LPM	40	
TOTAL CONNECTED LOAD	KW	24.5	
MACHINE DIMENSION ( L x W x H )	MM	4000 X 1400 X 1950	
MACHINE WEIGHT	KG	3400	





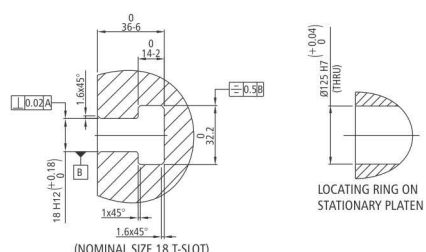
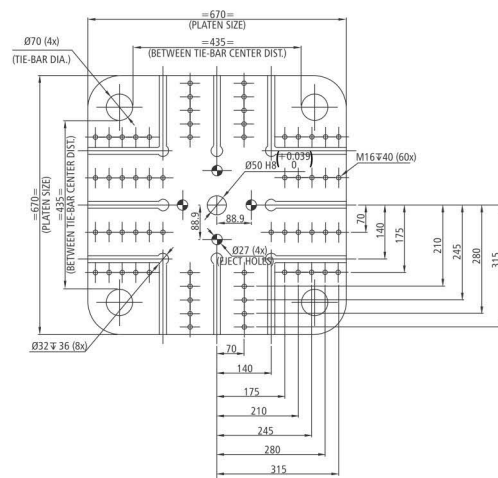
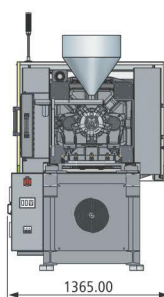
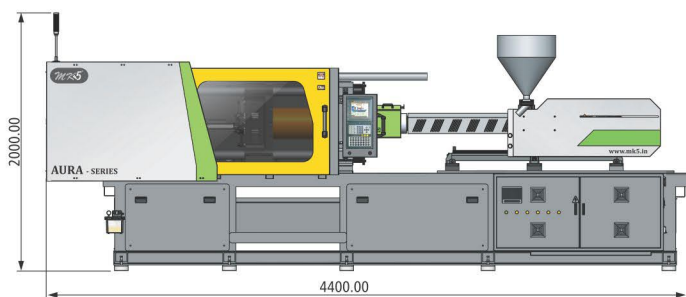


## TECHNICAL SPECIFICATION

INJECTION UNIT		AS-120			AS-180		
		A	B	C	A	B	C
INJECTION CAPACITY MAX. (GPPS)	GMS	169	221	280	378	466	564
THEORETICAL DISPLACEMENT	CC	178	232	294	398	491	594
INJECTION PRESSURE MAX.	BAR	2572	1969	1556	2316	1876	1550
INJECTION RATE	CC / SEC	96	126	159	135	167	202
INJECTION SCREW STROKE	MM	185	185	185	250	250	250
SCREW DIAMETER	MM	35	40	45	45	50	55
SCRE L/D RATIO		22.86	20	17.78	24.44	22	20
SCREW SPEED	RPM	250	250	250	250	250	250
SCREW TORQUE	NM	875			1095		
PLASTICIZING RATE (GPPS)	GM / SEC	12	17	25	25	33	42
NO. OF PYROMETERS (BARREL+NOZZLE)		5+1			5+1		
TOTAL HEAT CAPACITY	KW	10			16.5		

CLAMP UNIT							
CLAMP FORCE	TON	120			120		
CLAMP STROKE	MM	380			380		
MAXIMUM DAYLIGHT	MM	880			880		
MINIMUM MOULD HEIGHT	MM	150			150		
MAXIMUM MOULD HEIGHT	MM	500			500		
PLATEN SIZE (H X V)	MM	670 X 670			670 X 670		
DISTANCE BETWEEN TIE ROD	MM	435 X 435			435 X 435		
TIE ROD DIAMETER	MM	70			70		
EJECTOR STROKER	MM	130			130		
EJECTOR FORCE	TON	3.5			3.5		
MOULD WEIGHT CAPACITY (STATE./MOVING)	KG	350/700			350/700		

GENERAL							
ELECTRIC MOTOR	KW	15			15		
TOTAL OIL CAPACITY	LTR.	252			252		
WATER REQUIREMENT (INLET TEMP.29 C)	LPM	50			50		
TOTAL CONNECTED LOAD	KW	25			31.5		
MACHINE DIMENSION ( L x W x H )	MM	4400 X 1365 X 2000			4400 X 1365 X 2000		
MACHINE WEIGHT	KG	5550			6000		

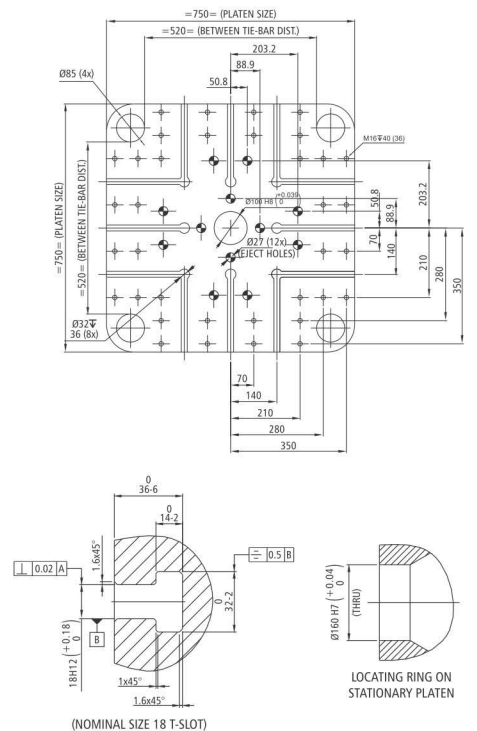
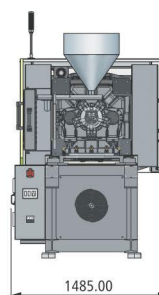
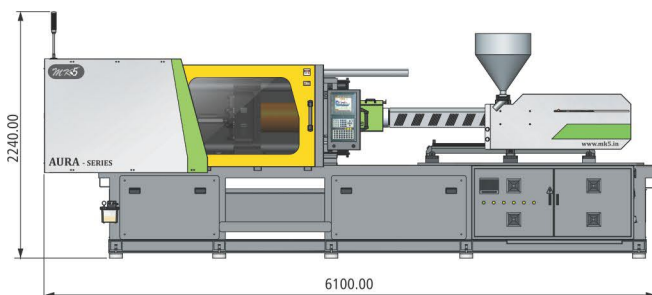


## TECHNICAL SPECIFICATION

INJECTION UNIT		AS-180			AS-230		
		A	B	C	A	B	C
INJECTION CAPACITY MAX. (GPPS)	GMS	378	466	564	632	883	1024
THEORETICAL DISPLACEMENT	CC	398	491	594	665	929	1078
INJECTION PRESSURE MAX.	BAR	2316	1876	1550	1519	1466	1264
INJECTION RATE	CC / SEC	135	167	202	215	256	296
INJECTION SCREW STROKE	MM	250	250	250	280	280	280
SCREW DIAMETER	MM	45	50	55	55	65	70
SCRE L/D RATIO		24.44	22	20	20	22	20.43
SCREW SPEED	RPM	250	250	250	180	180	180
SCREW TORQUE	NM		1095			1860	
PLASTICIZING RATE (GPPS)	GM / SEC	25	33	42	29	43	57
NO. OF PYROMETERS (BARREL+NOZZLE)			5+1			4+2	
TOTAL HEAT CAPACITY	KW		16.5			18.5	

CLAMP UNIT			
CLAMP FORCE	TON		180
CLAMP STROKE	MM		460
MAXIMUM DAYLIGHT	MM		990
MINIMUM MOULD HEIGHT	MM		200
MAXIMUM MOULD HEIGHT	MM		550
PLATEN SIZE (H X V)	MM	750 X 750	750 X 750
DISTANCE BETWEEN TIE ROD	MM	520 X 520	520 X 520
TIE ROD DIAMETER	MM	85	85
EJECTOR STROKER	MM	160	160
EJECTOR FORCE	TON	5	5
MOULD WEIGHT CAPACITY (STATE./MOVING)	KG	500 / 100	500 / 1000

GENERAL			
ELECTRIC MOTOR	KW	25	25
TOTAL OIL CAPACITY	LTR.	366	366
WATER REQUIREMENT (INLET TEMP.29 C)	LPM	50	50
TOTAL CONNECTED LOAD	KW	41.5	43.5
MACHINE DIMENSION ( L x W x H )	MM	6100 X 1485 X 2240	6100 X 1485 X 2240
MACHINE WEIGHT	KG	7600	8000

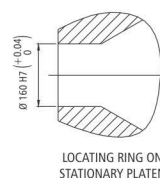
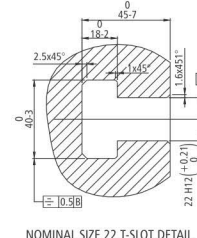
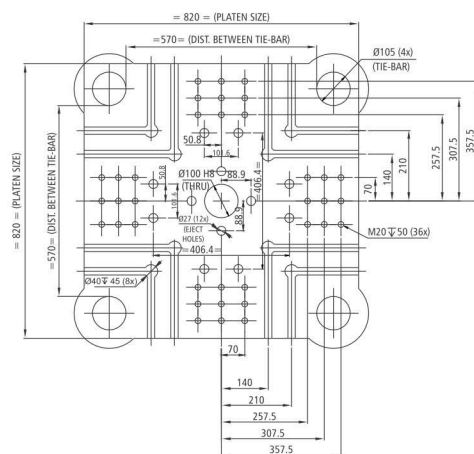
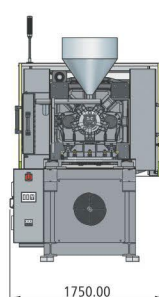
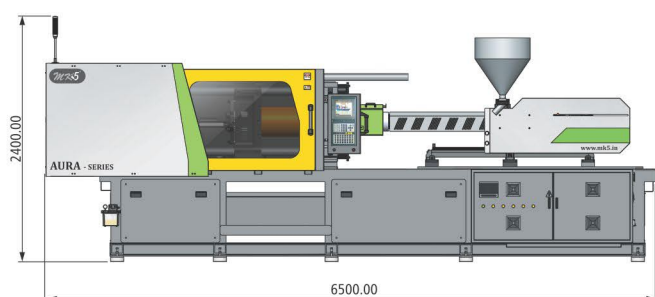


## TECHNICAL SPECIFICATION

INJECTION UNIT		AS-180			AS-230		
		A	B	C	A	B	C
INJECTION CAPACITY MAX. (GPPS)	GMS	378	466	564	632	883	1024
THEORETICAL DISPLACEMENT	CC	398	491	594	665	929	1078
INJECTION PRESSURE MAX.	BAR	2316	1876	1550	1519	1466	1264
INJECTION RATE	CC / SEC	135	167	202	215	256	296
INJECTION SCREW STROKE	MM	250	250	250	280	280	280
SCREW DIAMETER	MM	45	50	55	55	65	70
SCRE L/D RATIO		24.44	22	20	20	22	20.43
SCREW SPEED	RPM	250	250	250	180	180	180
SCREW TORQUE	NM	1095			1860		
PLASTICIZING RATE (GPPS)	GM / SEC	25	33	42	29	43	57
NO. OF PYROMETERS (BARREL+NOZZLE)		5+1			4+2		
TOTAL HEAT CAPACITY	KW	16.5			18.5		

CLAMP UNIT		AS-180			AS-230		
CLAMP FORCE	TON	230			230		
CLAMP STROKE	MM	550			550		
MAXIMUM DAYLIGHT	MM	1270			1270		
MINIMUM MOULD HEIGHT	MM	200			200		
MAXIMUM MOULD HEIGHT	MM	720			720		
PLATEN SIZE (H X V)	MM	860 X 860			860 X 860		
DISTANCE BETWEEN TIE ROD	MM	570 X 570			570 X 570		
TIE ROD DIAMETER	MM	105			105		
EJECTOR STROKER	MM	160			160		
EJECTOR FORCE	TON	6			6		
MOULD WEIGHT CAPACITY (STATE./MOVING)	KG	667/1333			667/1333		

GENERAL		AS-180			AS-230		
ELECTRIC MOTOR	KW	25			36		
TOTAL OIL CAPACITY	LTR.	400			400		
WATER REQUIREMENT (INLET TEMP.29 C)	LPM	75			75		
TOTAL CONNECTED LOAD	KW	41.5			54.5		
MACHINE DIMENSION ( L x W x H )	MM	6500 X 1750 X 2400			6500 X 1750 X 2400		
MACHINE WEIGHT	KG	9500			10000		

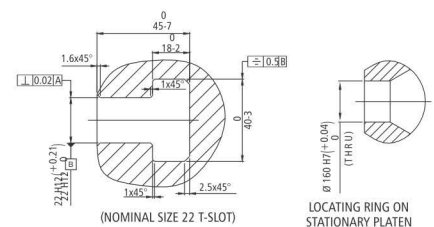
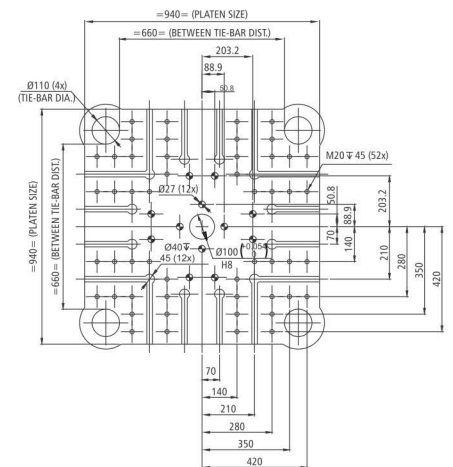
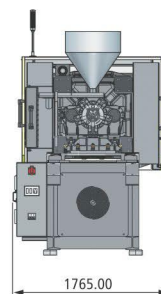
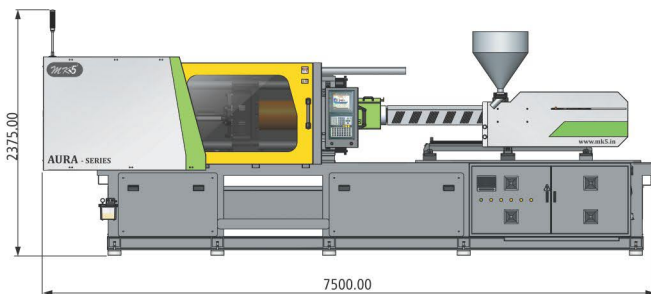


## TECHNICAL SPECIFICATION

INJECTION UNIT		AS-230			AS-275		
		A	B	C	A	B	C
INJECTION CAPACITY MAX. (GPPS)	GMS	632	883	1024	1316	1719	2176
THEORETICAL DISPLACEMENT	CC	665	929	1078	1385	1810	2290
INJECTION PRESSURE MAX.	BAR	1519	1466	1264	2182	1671	1320
INJECTION RATE	CC/SEC	215	256	296	330	431	545
INJECTION SCREW STROKE	MM	280	280	280	360	360	360
SCREW DIAMETER	MM	55	65	70	70	80	90
SCRE L/D RATIO		20	22	20.43	22.9	20	17.8
SCREW SPEED	RPM	180	180	180	146	146	146
SCREW TORQUE	NM		1860			4392	
PLASTICIZING RATE (GPPS)	GM / SEC	29	43	57	52	71	92
NO. OF PYROMETERS (BARREL+NOZZLE)			4+2			5+2	
TOTAL HEAT CAPACITY	KW		18.5			28	

CLAMP UNIT				
CLAMP FORCE	TON		275	275
CLAMP STROKE	MM		620	620
MAXIMUM DAYLIGHT	MM		1420	1420
MINIMUM MOULD HEIGHT	MM		200	200
MAXIMUM MOULD HEIGHT	MM		800	800
PLATEN SIZE (H X V)	MM		940 X 940	940 X 940
DISTANCE BETWEEN TIE ROD	MM		660 X 660	660 X 660
TIE ROD DIAMETER	MM		110	110
EJECTOR STROKER	MM		200	200
EJECTOR FORCE	TON		8	8
MOULD WEIGHT CAPACITY (STATE./MOVING)	KG		934 / 1866	934/1866

GENERAL				
ELECTRIC MOTOR	KW		36	36
TOTAL OIL CAPACITY	LTR.		600	600
WATER REQUIREMENT (INLET TEMP.29 C)	LPM		100	100
TOTAL CONNECTED LOAD	KW		54.5	64
MACHINE DIMENSION ( L x W x H )	MM		7500 X 1765 X 2375	7500 X 1765 X 2375
MACHINE WEIGHT	KG		12200	13500



**NOTE:**

- All dimensions are in mm.
- T-slot & thread center dist. Are typical in four quadrants.
- Thread & t-slot dimensions are as per euromap standard.
- Eject center dist. Are typical in four quadrants.



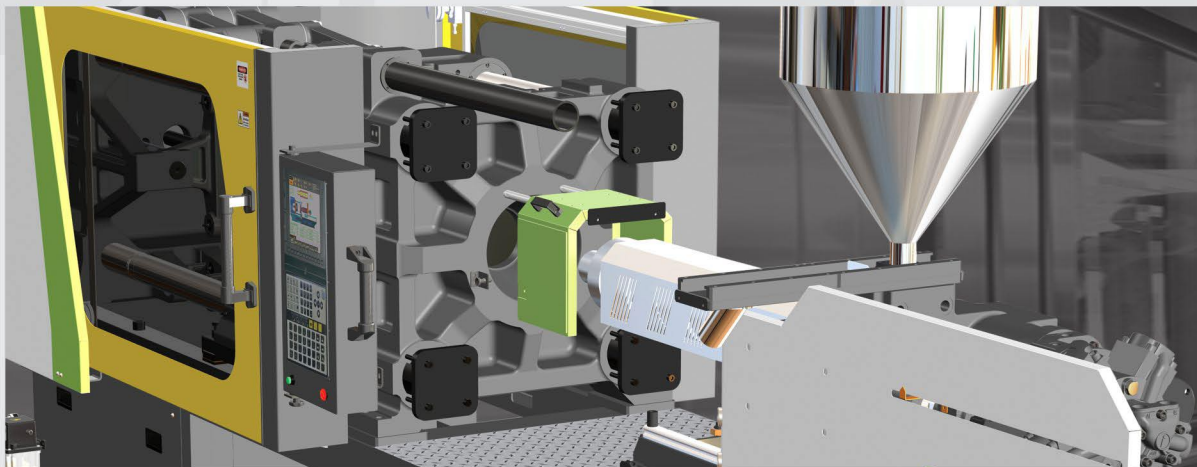
## STANDARD SCOPE AND SPECIFICATION

### Injection Unit

- Injection Unit on Corrosion Resistant LM Guides
- Two drive cylinder for the screw injection
- Multi-stage injection speed, pressure and position
- Multi-stage holding pressure, time and position
- Controlled transfer position of injection to hold on
- Monitored starting and end injection position
- Suck back pre and post plasticizing
- Self-purging function
- Plasticizing by high torque hydro-motor
- Barrel temperature PID controlled
- Cold start protection

### Clamping Unit

- 5 - point double toggle with excellent kinematics to offer smooth movement of moving platen
- Mechanical, electrical and hydraulic safety gate interlock
- Low pressure and safety
- Multi-stage control of pressure, speed, and position of mould open/close & ejection
- Cooling water manifold for mould cooling
- Hydraulic core pull
- Auto lubrication in clamp unit
- T-Slot Platens with Tapped Holes

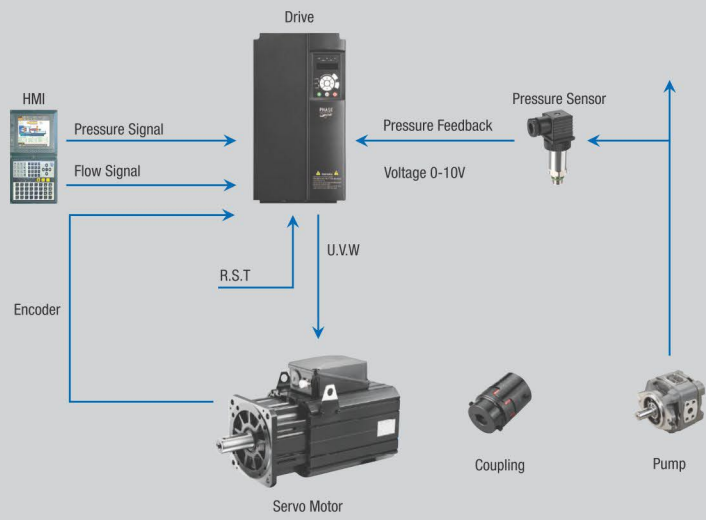


### Hydraulic Unit

- Efficient servo motor
- Dynamic gear pump
- Oil temperature alarm
- Oil level gauge
- Hydraulic oil cooler
- Hydraulic valve on / off indication with LED
- Continuous oil filtration with 10 micron filter

### Controller

- Real-time Information - Understanding the product status or machine via smart phone, tablet and pc
- Data Analysis - Improving the quality and efficiency of production by state record and report analysis
- Authority Management - The use of different levels of management authority
- Chart Analysis - Simple chart analysis
- Language - English are available
- HMI - 10.4" LCD display

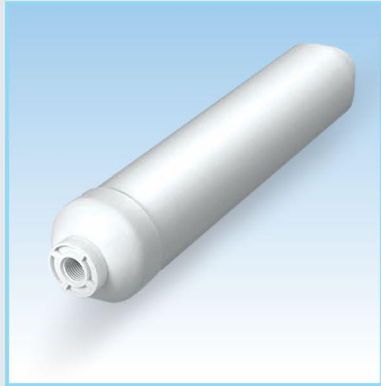


Machine Controller Comprises of High Technology System

## Application



# Globally Trusted For Quality Products





## Horizontal Toggle Injection Moulding Machine

Mfg. by:

**KASHYAP**  
— INDUSTRIES —



B/53, Bileshwar Industrial Estate,  
Opp. G.V.M.M, S.P Ring Road Circle,  
Odhav, Ahmedabad – 382415



+91 9879504048  
+91 9974010321  
+91 9638990197



sales@mk5.in



www.mk5.in

mk5 india

