

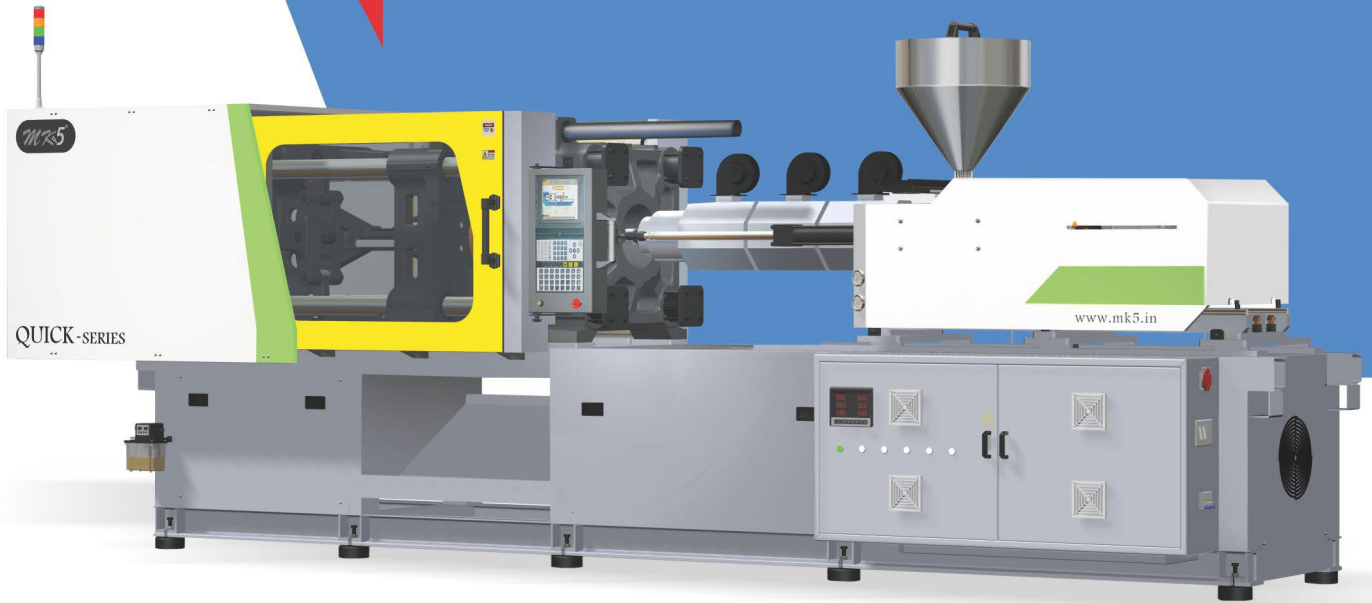
www.mk5.in



Excellence.....
in **technology** and **quality**

Quick
SERIES
120-275 Ton

PVC



Horizontal
Toggle Injection Moulding Machine



Mfg. by:
KASHYAP
—INDUSTRIES—

w w w . m k 5 . i n



the **revolution** continues

SINCE 2005



Company Profile

Kashyap Industries entered the Indian market in the year 2005. With our headquarters in Ahmedabad, Gujarat, we have spread our wings since we entered and become a trusted name in the Plastic Injection Moulding Machines industry.

Our state of the art facility is spread over a large area and fully equipped to manufacture a wide range of machines. These machines are sold under our Brand Name 'MK5'. Here we not only manufacture but also design, research and test the machines for various parameters like performance, safety, speed, energy consumptions and so on.

As the leading Plastic Injection Moulding Machine Manufacturer, we source the best materials to build highly efficient plastic moulding machines. Our machines are mainly used in automotive, mechanical, food and beverages, aerospace and other industries. Due to their application, these machines are built to be rugged, robust and durable even when used constantly.

We use the latest technology to operate our machines making them the most energy efficient and fully automatic high speed machines. A dedicated team of engineers and researchers are constantly working to improvise the machines and make them future ready. With optimum performance and unmatched durability, MK5 has created a space for itself in the Indian market. With a fair share of international clients, we envision to change the way how plastic parts are delivered and manufactured. We desire to make our unparalleled quality and pricing available to clients around the world becoming a global brand.



400+
CLIENT BASE



50+
STAFF



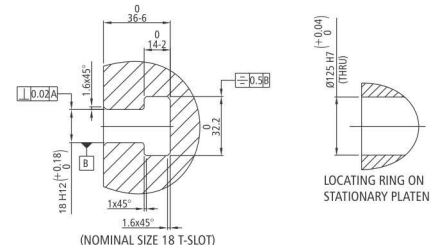
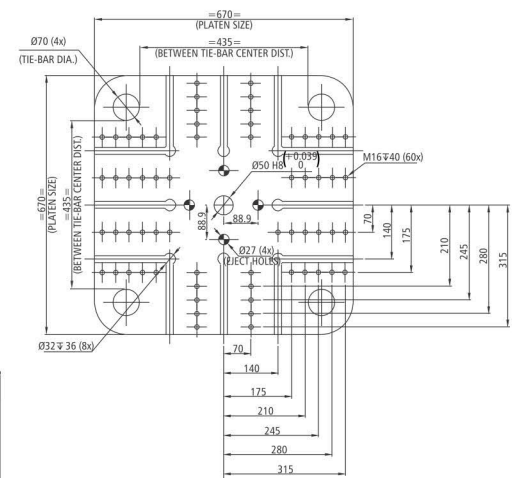
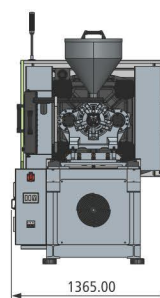
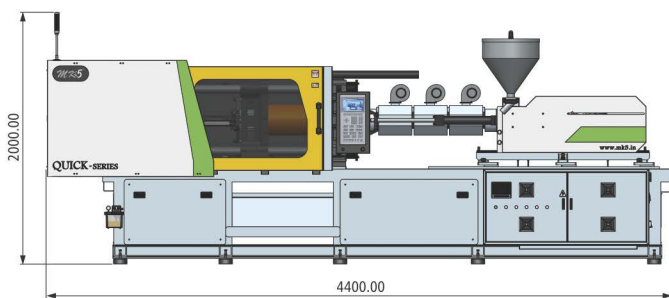
20+
PRODUCTS

TECHNICAL SPECIFICATION

INJECTION UNIT		AS-180		
		A	B	C
INJECTION CAPACITY MAX. (GPPS)	GMS	378	466	564
THEORETICAL DISPLACEMENT	CC	398	491	594
INJECTION PRESSURE MAX.	BAR	2316	1876	1550
INJECTION RATE	CC / SEC	135	167	202
INJECTION SCREW STROKE	MM	250	250	250
SCREW DIAMETER	MM	45	50	55
SCRE L/D RATIO		24.44	22	20
SCREW SPEED	RPM	250	250	250
SCREW TORQUE	NM		1095	
PLASTICIZING RATE (GPPS)	GM / SEC	25	33	42
NO. OF PYROMETERS (BARREL+NOZZLE)			5+1	
TOTAL HEAT CAPACITY	KW		11	

CLAMP UNIT			
CLAMP FORCE	TON		120
CLAMP STROKE	MM		380
MAXIMUM DAYLIGHT	MM		880
MINIMUM MOULD HEIGHT	MM		150
MAXIMUM MOULD HEIGHT	MM		500
PLATEN SIZE (H X V)	MM		670 X 670
DISTANCE BETWEEN TIE ROD	MM		435 X 435
TIE ROD DIAMETER	MM		70
EJECTOR STROKER	MM		130
EJECTOR FORCE	TON		3.5
MOULD WEIGHT CAPACITY (STATE./MOVING)	KG		350 / 700

GENERAL			
ELECTRIC MOTOR	KW		15
TOTAL OIL CAPACITY	LTR.		252
WATER REQUIREMENT (INLET TEMP.29 C)	LPM		50
TOTAL CONNECTED LOAD	KW		26
MACHINE DIMENSION (L X W X H)	MM		4400 X 1365 X 2000
MACHINE WEIGHT	KG		5550

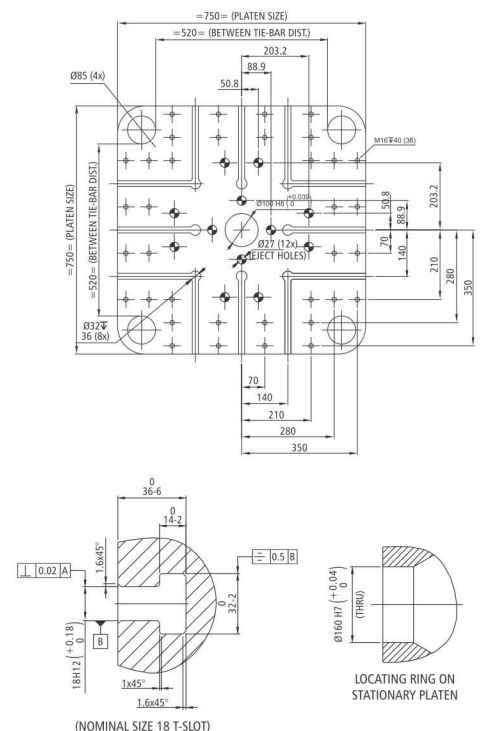
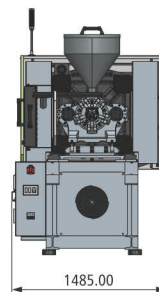
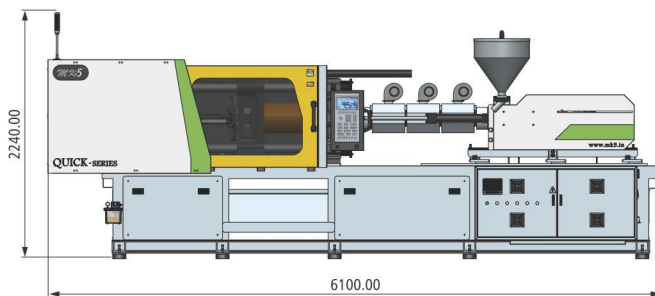


TECHNICAL SPECIFICATION

INJECTION UNIT		AS-180			AS-230		
		A	B	C	A	B	C
INJECTION CAPACITY MAX. (GPPS)	GMS	378	466	564	632	883	1024
THEORETICAL DISPLACEMENT	CC	398	491	594	665	929	1078
INJECTION PRESSURE MAX.	BAR	2316	1876	1550	1519	1466	1264
INJECTION RATE	CC / SEC	135	167	202	215	256	296
INJECTION SCREW STROKE	MM	250	250	250	280	280	280
SCREW DIAMETER	MM	45	50	55	55	65	70
SCRE L/D RATIO		24.44	22	20	20	22	20.43
SCREW SPEED	RPM	250	250	250	180	180	180
SCREW TORQUE	NM		1095			1860	
PLASTICIZING RATE (GPPS)	GM / SEC	25	33	42	29	43	57
NO. OF PYROMETERS (BARREL+NOZZLE)			5+1			4+2	
TOTAL HEAT CAPACITY	KW		11			13.5	

CLAMP UNIT			
CLAMP FORCE	TON		180
CLAMP STROKE	MM		460
MAXIMUM DAYLIGHT	MM		990
MINIMUM MOULD HEIGHT	MM		200
MAXIMUM MOULD HEIGHT	MM		550
PLATEN SIZE (H X V)	MM		750 X 750
DISTANCE BETWEEN TIE ROD	MM		520 X 520
TIE ROD DIAMETER	MM		85
EJECTOR STROKER	MM		160
EJECTOR FORCE	TON		5
MOULD WEIGHT CAPACITY (STATE./MOVING)	KG		500 / 1000

GENERAL			
ELECTRIC MOTOR	KW		25
TOTAL OIL CAPACITY	LTR.		366
WATER REQUIREMENT (INLET TEMP.29 C)	LPM		50
TOTAL CONNECTED LOAD	KW		38.5
MACHINE DIMENSION (L x W x H)	MM		6100 X 1485 X 2240
MACHINE WEIGHT	KG		7600

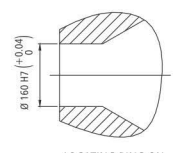
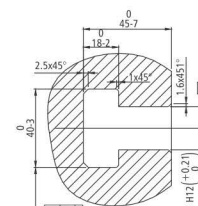
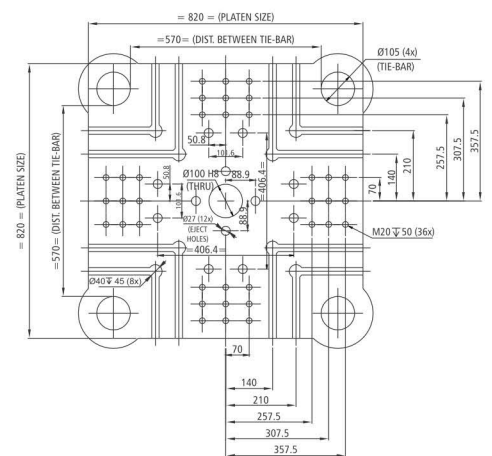
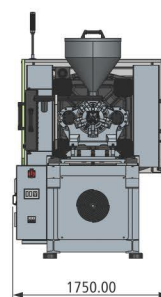
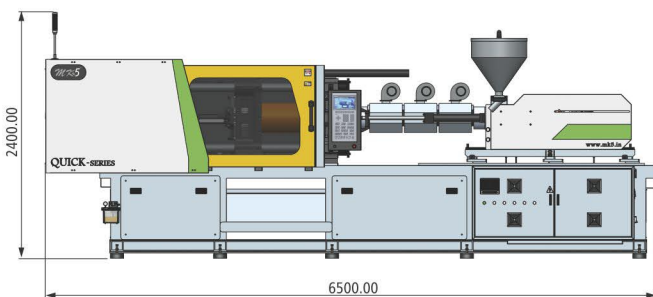


TECHNICAL SPECIFICATION

INJECTION UNIT		AS-230		
		A	B	C
INJECTION CAPACITY MAX. (GPPS)	GMS	632	883	1024
THEORETICAL DISPLACEMENT	CC	665	929	1078
INJECTION PRESSURE MAX.	BAR	1519	1466	1264
INJECTION RATE	CC / SEC	215	256	296
INJECTION SCREW STROKE	MM	280	280	280
SCREW DIAMETER	MM	55	65	70
SCRE L/D RATIO		20	22	20.43
SCREW SPEED	RPM	180	180	180
SCREW TORQUE	NM		1860	
PLASTICIZING RATE (GPPS)	GM / SEC	29	43	57
NO. OF PYROMETERS (BARREL+NOZZLE)			4+2	
TOTAL HEAT CAPACITY	KW		13.5	

CLAMP UNIT		
CLAMP FORCE	TON	230
CLAMP STROKE	MM	550
MAXIMUM DAYLIGHT	MM	1270
MINIMUM MOULD HEIGHT	MM	200
MAXIMUM MOULD HEIGHT	MM	720
PLATEN SIZE (H X V)	MM	860 X 860
DISTANCE BETWEEN TIE ROD	MM	570 X 570
TIE ROD DIAMETER	MM	105
EJECTOR STROKER	MM	160
EJECTOR FORCE	TON	6
MOULD WEIGHT CAPACITY (STATE./MOVING)	KG	667 / 1333

GENERAL		
ELECTRIC MOTOR	KW	36
TOTAL OIL CAPACITY	LTR.	400
WATER REQUIREMENT (INLET TEMP.29 C)	LPM	75
TOTAL CONNECTED LOAD	KW	49.5
MACHINE DIMENSION (L x W x H)	MM	6500 X 1750 X 2400
MACHINE WEIGHT	KG	10000



NOMINAL SIZE 22 T-SLOT DETAIL

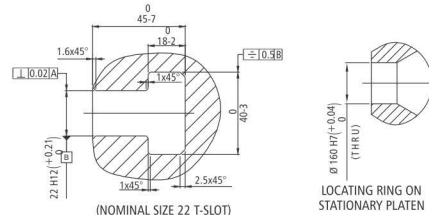
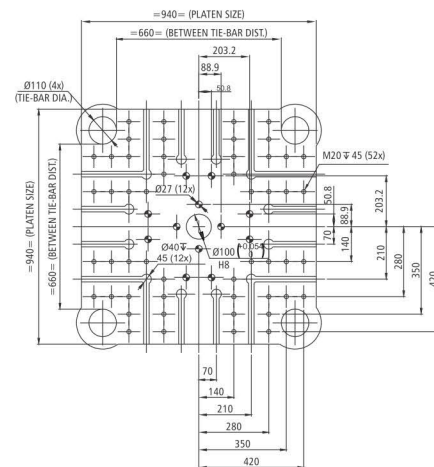
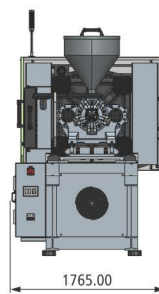
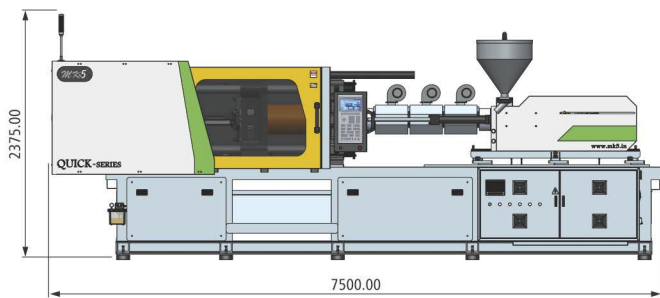
LOCATING RING ON STATIONARY PLATEN

TECHNICAL SPECIFICATION

INJECTION UNIT		AS-230			AS-275		
		A	B	C	A	B	C
INJECTION CAPACITY MAX. (GPPS)	GMS	632	883	1024	1316	1719	2176
THEORETICAL DISPLACEMENT	CC	665	929	1078	1385	1810	2290
INJECTION PRESSURE MAX.	BAR	1519	1466	1264	2182	1671	1320
INJECTION RATE	CC / SEC	215	256	296	330	431	545
INJECTION SCREW STROKE	MM	280	280	280	360	360	360
SCREW DIAMETER	MM	55	65	70	70	80	90
SCRE L/D RATIO		20	22	20.43	22.9	20	17.8
SCREW SPEED	RPM	180	180	180	146	146	146
SCREW TORQUE	NM		1860			4392	
PLASTICIZING RATE (GPPS)	GM / SEC	29	43	57	52	71	92
NO. OF PYROMETERS (BARREL+NOZZLE)			4+2			5+2	
TOTAL HEAT CAPACITY	KW		13.5			16.5	

CLAMP UNIT			
CLAMP FORCE	TON		275
CLAMP STROKE	MM		620
MAXIMUM DAYLIGHT	MM		1420
MINIMUM MOULD HEIGHT	MM		200
MAXIMUM MOULD HEIGHT	MM		800
PLATEN SIZE (H X V)	MM		940 X 940
DISTANCE BETWEEN TIE ROD	MM		660 X 660
TIE ROD DIAMETER	MM		110
EJECTOR STROKER	MM		200
EJECTOR FORCE	TON		8
MOULD WEIGHT CAPACITY (STATE./MOVING)	KG		934 / 1866

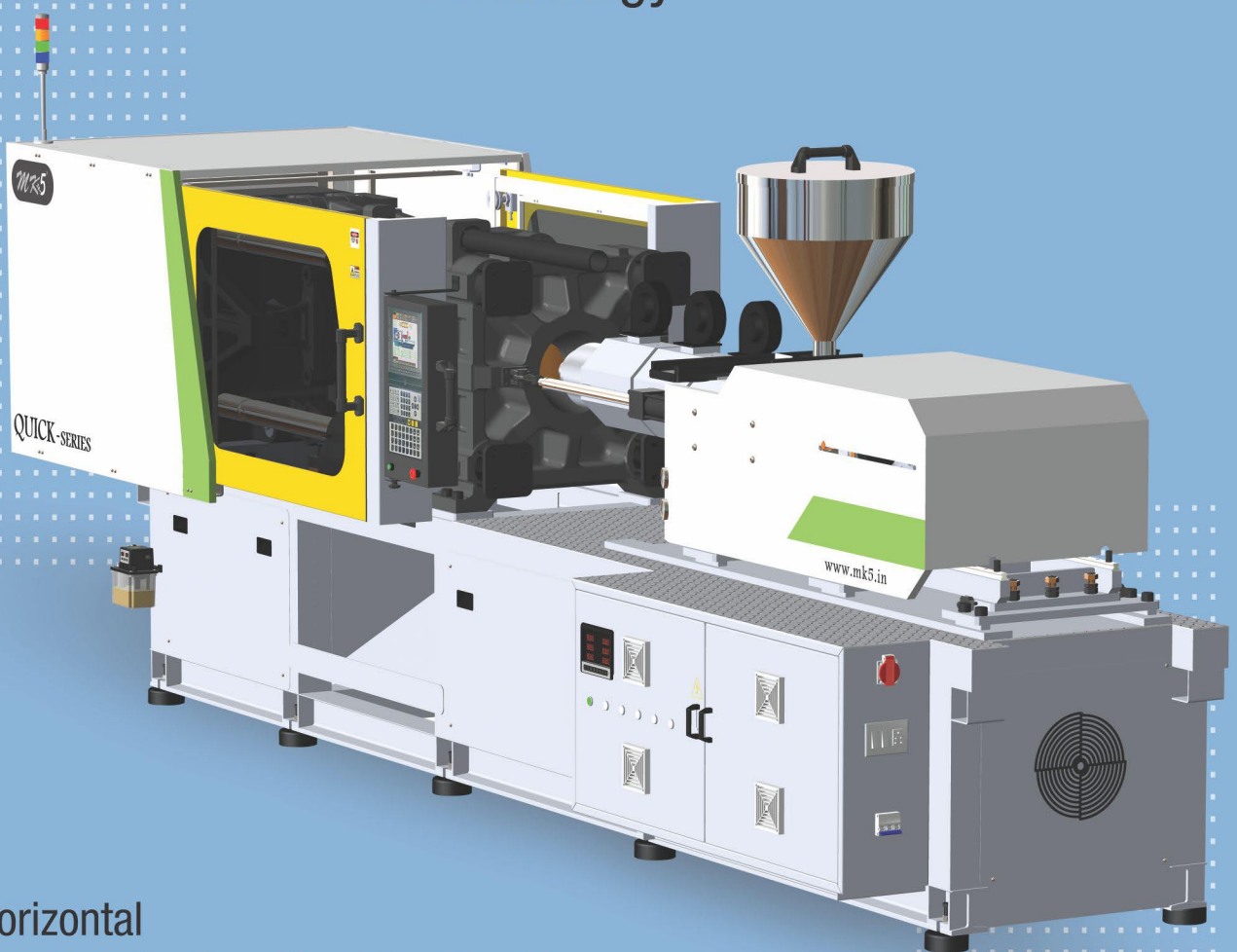
GENERAL			
ELECTRIC MOTOR	KW		36
TOTAL OIL CAPACITY	LTR.		600
WATER REQUIREMENT (INLET TEMP.29 C)	LPM		100
TOTAL CONNECTED LOAD	KW		49.5
MACHINE DIMENSION (L x W x H)	MM		7500 X 1765 X 2375
MACHINE WEIGHT	KG		12200



NOTE:
 • All dimensions are in mm.
 • T-slot & thread center dist. Are typical in four quadrants.
 • Thread & t-slot dimensions are as per euromap standard. • Eject center dist. Are typical in four quadrants.



Energy-Saving Technology



Horizontal
Toggle Injection Moulding Machine

STANDARD SCOPE AND SPECIFICATION

Injection Unit

- Special Designed Screw for PVC Processing
- Blower on Barrel Zone
- Injection Unit on Corrosion Resistant LM Guides
- Two drive cylinder for the screw injection
- Multi-stage injection speed, pressure and position"
- Multi-stage holding pressure, time and position"
- Controlled transfer position of injection to hold on
- Monitored starting and end injection position
- Suck back pre and post plasticizing
- Self-purging function
- Plasticizing by high torque hydro-motor
- Barrel temperature PID controlled
- Cold start protection

Clamping Unit

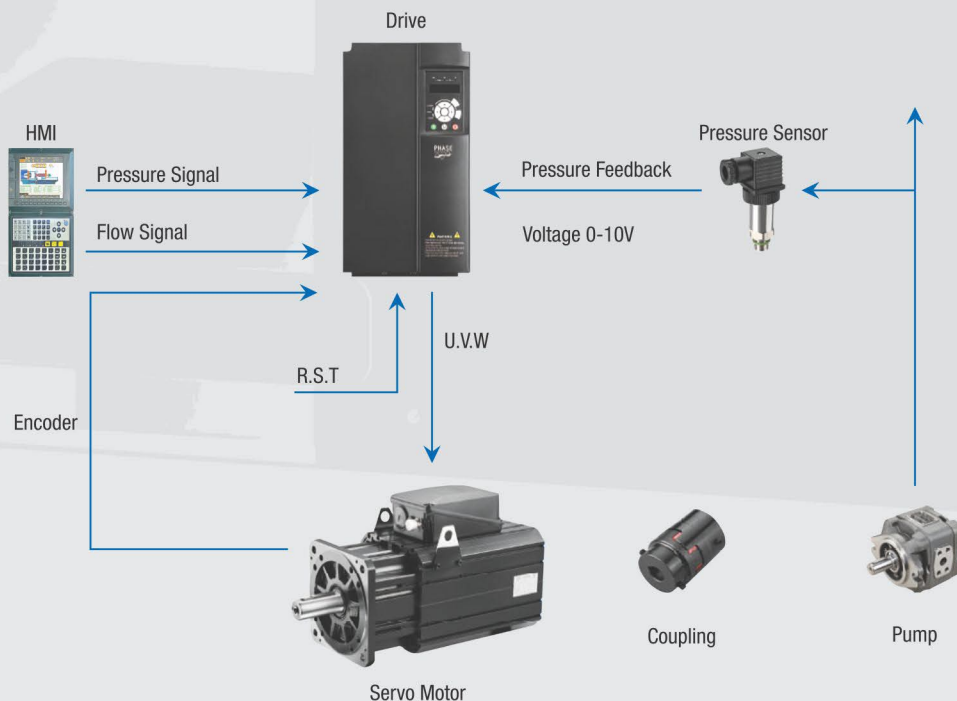
- 5 - point double toggle with excellent kinematics to offer smooth movement of moving platen
- Mechanical, electrical and hydraulic safety gate interlock
- Low pressure and safety
- Multi-stage control of pressure, speed, and position of mould open / close & ejection
- Cooling water manifold for mould cooling
- Hydraulic core pull
- Auto lubrication in clamp unit
- T-Slot Platens with Tapped Holes

Hydraulic Unit

- Efficient servo motor
- Dynamic gear pump
- Oil temperature alarm
- Oil level gauge
- Hydraulic oil cooler
- Hydraulic valve on / off indication with LED
- Continuous oil filtration with 10 micron filter

Controller

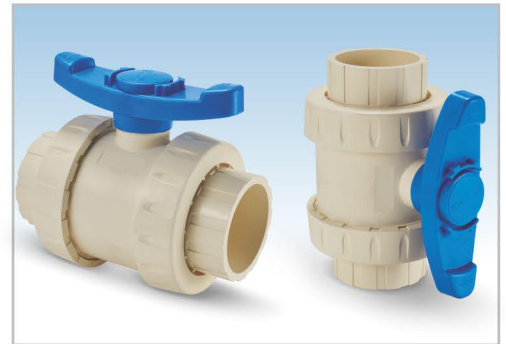
- Real-time Information - Understanding the product status or machine via smart phone, tablet and pc
- Data Analysis - Improving the quality and efficiency of production by state record and report analysis
- Authority Management - The use of different levels of management authority
- Chart Analysis - Simple chart analysis
- Language - English are available
- HMI - 10.4" LCD display



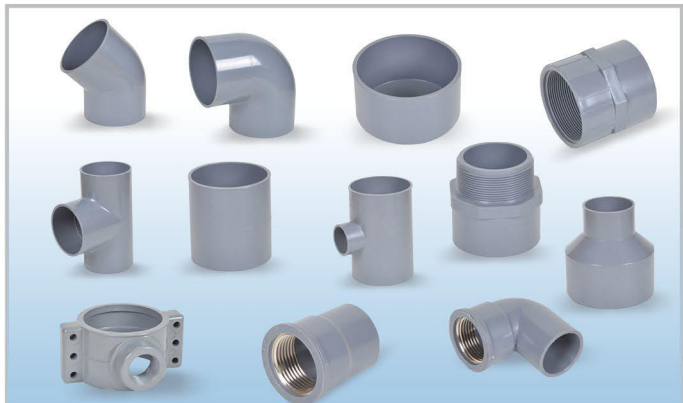
Machine Controller Comprises of High Technology System

Horizontal Toggle Injection Moulding Machine

Application





Superior Technology Superior Performance





Mfg. by:
KASHYAP
— INDUSTRIES —

 B/53, Bileshwar Industrial Estate,
Opp. G.V.M.M, S.P Ring Road Circle,
Odhav, Ahmedabad – 382415

 +91 9879504048
+91 9974010321
+91 9638990197

 sales@mk5.in

 www.mk5.in

mk5 india

