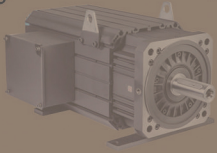


SERVO MOTOR DRIVE SYSTEM



www.mk5.in

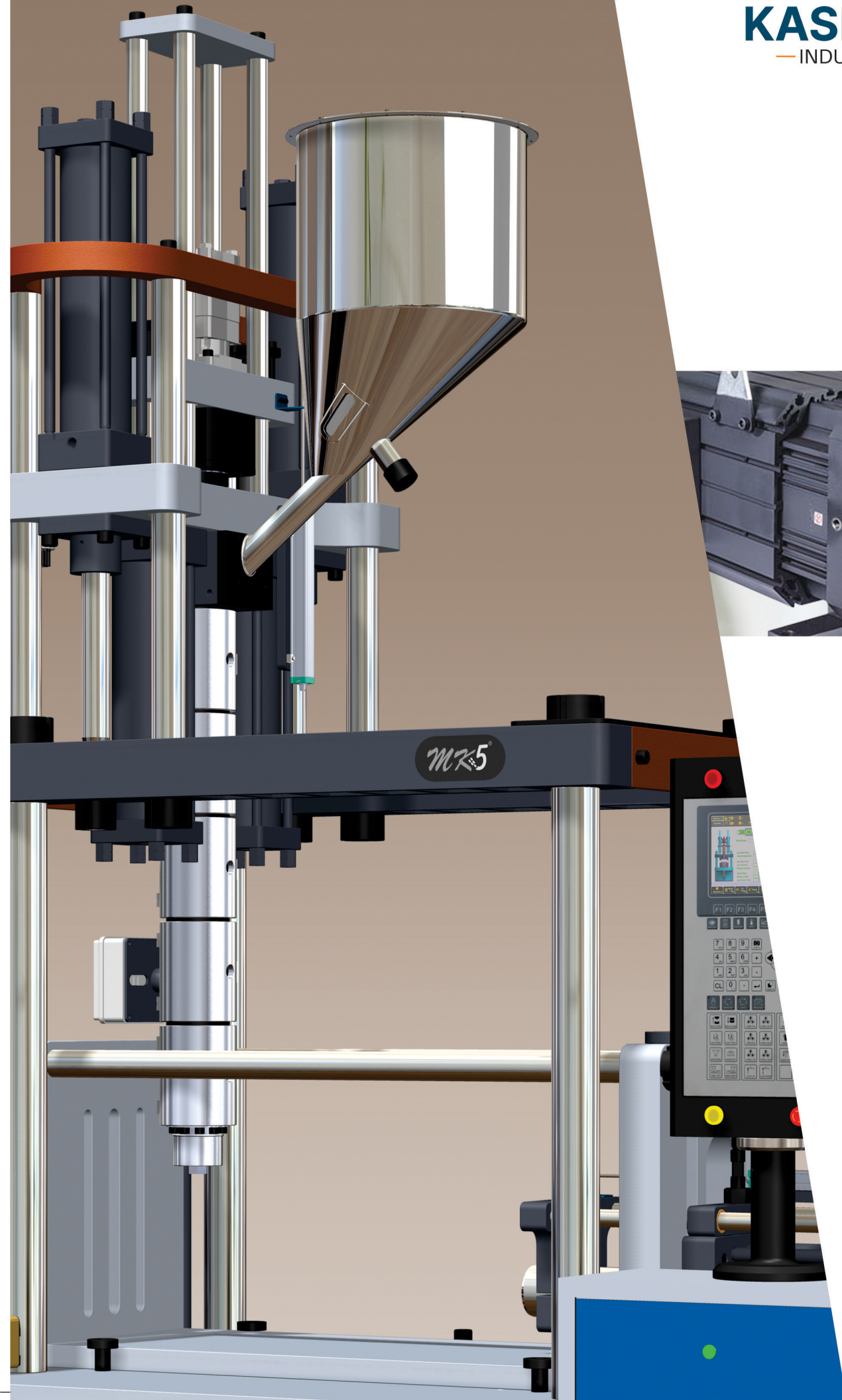
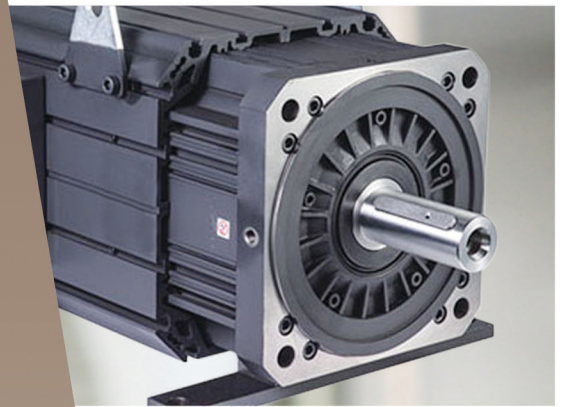
APS
SERIES
100 gm - 5000 gm

Excellence...
in **technology** and quality



Vertical Semi Auto Plastic Injection Moulding Machine

Mfg. by:
KASHYAP
— INDUSTRIES —





Company Profile

Kashyap Industries entered the Indian market in the year 2005. With our headquarters in Ahmedabad, Gujarat, we have spread our wings since we entered and become a trusted name in the Plastic Injection Moulding Machines industry.

Our state of the art facility is spread over a large area and fully equipped to manufacture a wide range of machines. These machines are sold under our Brand Name 'MK5'. Here we not only manufacture but also design, research and test the machines for various parameters like performance, safety, speed, energy consumptions and so on.

As the leading Plastic Injection Moulding Machine Manufacturer, we source the best materials to build highly efficient plastic moulding machines. Our machines are mainly used in automotive, mechanical, food and beverages, aerospace and other industries. Due to their application, these machines are built to be rugged, robust and durable even when used constantly.

We use the latest technology to operate our machines making them the most energy efficient and fully automatic high speed machines. A dedicated team of engineers and researchers are constantly working to improvise the machines and make them future ready. With optimum performance and unmatched durability, MK5 has created a space for itself in the Indian market. With a fair share of international clients, we envision to change the way how plastic parts are delivered and manufactured. We desire to make our unparalleled quality and pricing available to clients around the world becoming a global brand.



400+
CLIENT BASE



50+
STAFF



20+
PRODUCTS

TECHNICAL SPECIFICATION

INJECTION UNIT		APS - 100	APS - 150	APS - 200	APS - 250	APS - 300	APS - 400	APS - 500	APS - 750	APS - 1000	APS - 1500	APS - 2000	APS - 2500	APS - 3000	APS - 5000
INJECTION WEIGHT (GPPS)	GMS	155	215	281	348	423	560	688	994	1353	1993	2650	3288	3989	6591
THEORETICAL DISPLACEMENT	CC	164	226	295	366	445	589	725	1046	1424	2097	2790	3461	4199	6937
SCREW L/D RATIO		18	18	19	19	19	19	18	18	20	19	19	19	19	20
SHOT SIZE (THERORETICAL)	MM	170	180	235	230	280	300	305	370	370	545	555	610	740	730
SCREW DIAMETER	MM	35	40	40	45	45	50	55	60	70	70	80	85	85	85 (110 Chamber)
INJECTION PRESSURE	PSI	1500	1500	1500	1500	1500	1500	1800	1800	2000	2000	2000	2000	2000	2000
SCREW SPEED	RPM	235	235	190	190	250	250	160	160	200	125	120	120	125	125
NO.OF PYROMETERS (BARREL+NOZZLE)		4+1	4+1	4+1	4+1	4+1	4+1	5+1	5+1	6+1	6+1	6+1	7+1	7+1	8+1
TOTAL HEAT CAPACITY	KW	8	8	8	8	8	8	9.8	9.8	11.9	11.9	11.9	13.9	13.9	15.5

CLAMP UNIT															
RAM STROKE	MM	430	430	475	475	700	700	775	775	825	900	1000	1050	1100	1100
CLAMP FORC	PSI	1800	1800	1800	1800	1800	1800	2000	2000	2000	2000	2000	2200	2200	2500
TABLE BETWEEN LENGTH	MM	790	790	910	910	1050	1050	1140	1140	1370	1370	1370	1465	1465	1640
MAX MOLD HEIGHT	MM	275	275	335	335	425	425	465	465	480	505	600	600	635	650
MIN MOLD HEIGHT	MM	100	100	100	100	100	100	125	125	125	130	150	150	150	200
EJECTOR STROKE	MM	50	50	50	50	50	50	100	100	100	100	100	100	100	100
EJECTOR FORCE	PSI	1500	1500	1500	1500	1500	1500	1500	1500	1500	1500	1500	1500	1500	1500

GENERAL															
MAX PUMP PRESSURE	BAR	150	150	150	150	150	150	160	160	160	160	160	160	160	160
TOTAL OIL CAPACITY	LTR	170	170	185	185	200	200	250	250	300	300	300	300	350	400
ELECTRIC MOTOR	KW	6.7	6.7	6.7	6.7	8.6	8.6	8.6	11.6	18.2	18.2	23	23	28.7	28.7
TOTAL CONNECTION LOAD	KW	14.7	14.7	14.7	14.7	16.6	16.6	18.4	21.4	30.1	30.1	34.9	36.9	42.6	44.2
MACHINE DIMENSION (L X W X H)	IN	83 X 50 X 133	83 X 50 X 133	89 X 50 X 134	89 X 50 X 138	99 X 60 X 145	99 X 60 X 150	118 X 66 X 150	118 X 66 X 165	102 X 51 X 170	102 X 51 X 180	130 X 65 X 200	130 X 65 X 205	130 X 65 X 210	115 X 72 X 215
MACHINE WEIGHT *	KG	1300	1400	1650	1850	1925	2000	2400	2650	3200	3500	3800	3950	4800	5500

STANDARD SCOPE AND SPECIFICATION

Injection Unit

- One / Tow drive cylinder for the screw injection.
- Multi-stage injection speed, pressure and position.
- Multi-stage holding pressure, time and position.
- Controlled transfer position of injection to hold on.
- Monitored starting and end injection position.
- Suck back pre and post plasticizing.
- Self-purging function.
- Plasticizing by high torque hydro-motor.
- Barrel temperature PID controlled.
- Cold start protection.

Clamping Unit

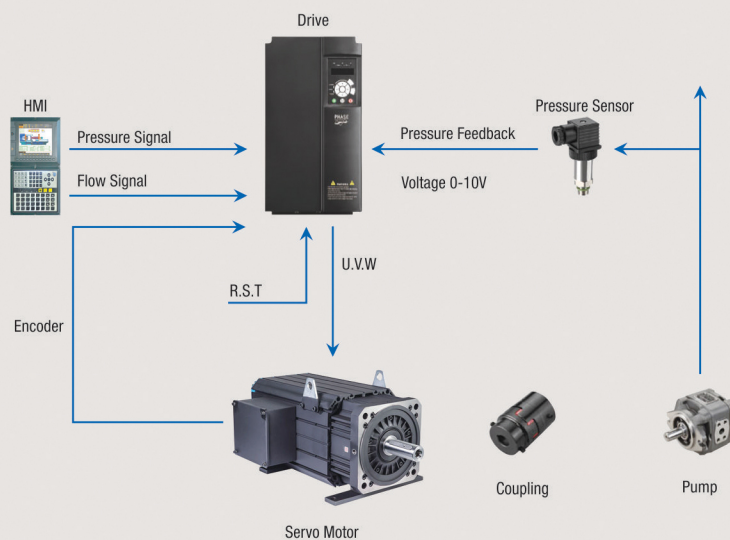
- Ram cylinder for mould closing system.
- Multi-stage control of pressure, speed, and position of mould open / close & ejection.
- Cooling water manifold for mould cooling.
- Hydraulic injector system.
- Chrome Plated Ram & Tie Rods .
- Mould clamping system in pressure switch with position.
- Proportional speed control with 3 closing & 3 opening speed.

Hydraulic Unit

- Efficient :- SERVO / VDP / PROPOSTIONAL
- Oil temperature alarm
- Hydraulic oil cooler
- Hydraulic valve on/off indication with LED
- Continuous oil filtration with 10 micron filter

Controller

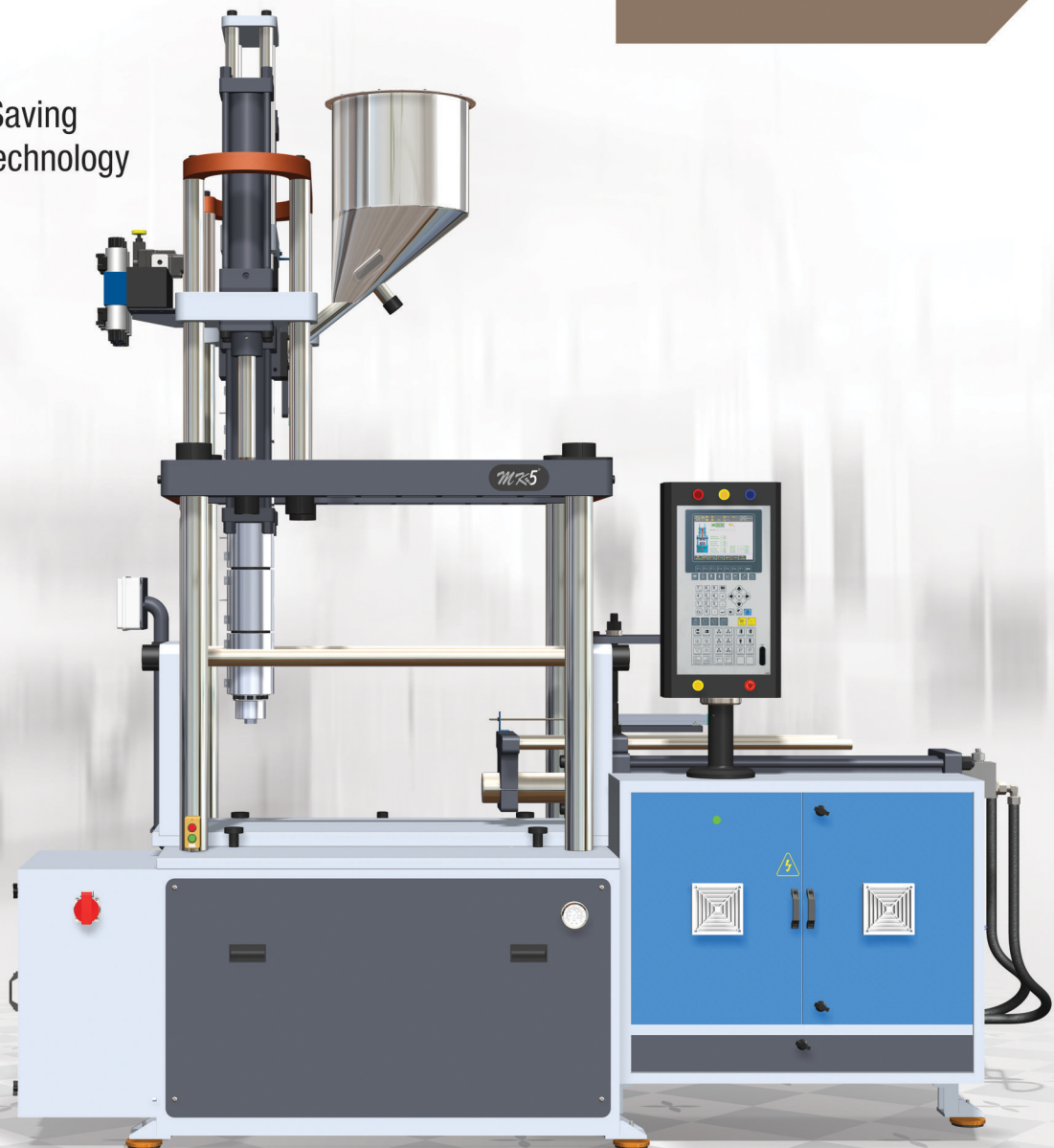
- Real-time Information - Understanding the product status or machine via smart phone, tablet and pc.
- Data Analysis - Improving the quality and efficiency of production by state recors and report analysis
- Authority Management - The use of different levels of management authority
- Chart Analysis - Simple chart analysis
- Language - English are available
- HMI - 8" LCD display



Machine Controller Comprises of High Technology System

Modernization with Smart Technology

Vertical Semi Auto Plastic Injection Moulding Machine

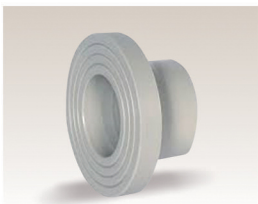
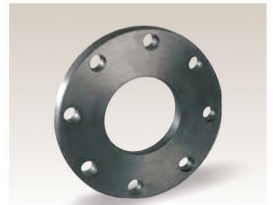
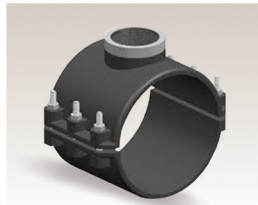
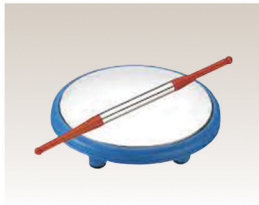


Features :

- Shot weight Consistency.
- Precision.
- Energy efficiency.
- Reliability of Operation.
- Productivity.
- Repeatability.
- HMI 8" LCD Display.





Application






Mfg. by:
KASHYAP
— INDUSTRIES —

 B/53, Bileshwar Industrial Estate,
Opp. G.V.M.M, S.P Ring Road Circle,
Odhav, Ahmedabad – 382415

 +91 9879504048
+91 9974010321
+91 9638990197

 sales@mk5.in

 www.mk5.in

mk5 india

