

www.mk5.in

**UC
SERIES**
400gm - 3000gm

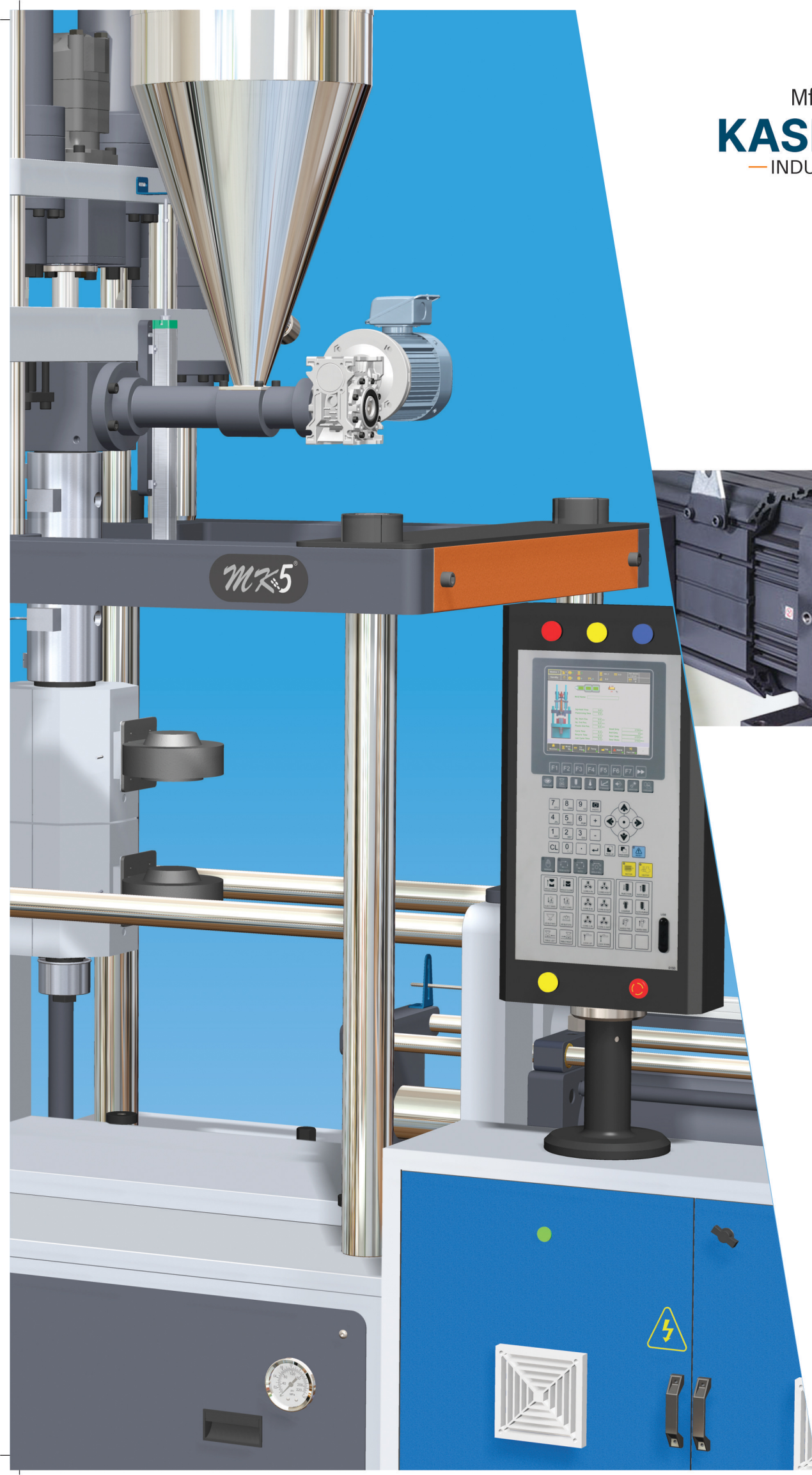
PVC

Excellence...
in **technology** and **quality**

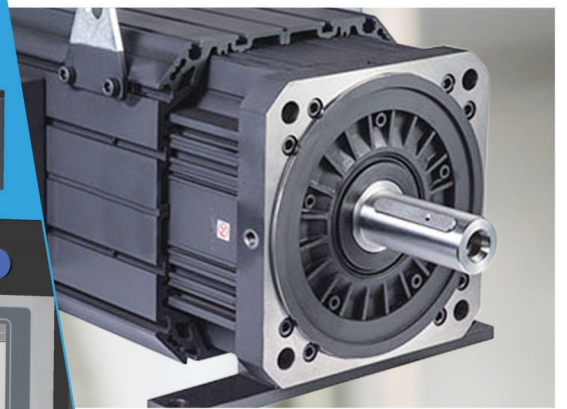


Vertical Semi Auto Plastic Injection Moulding Machine

Mfg. by:
KASHYAP
— INDUSTRIES —



MZ5





Company Profile

Kashyap Industries entered the Indian market in the year 2005. With our headquarters in Ahmedabad, Gujarat, we have spread our wings since we entered and become a trusted name in the Plastic Injection Moulding Machines industry.

Our state of the art facility is spread over a large area and fully equipped to manufacture a wide range of machines. These machines are sold under our Brand Name 'MK5'. Here we not only manufacture but also design, research and test the machines for various parameters like performance, safety, speed, energy consumptions and so on.

As the leading Plastic Injection Moulding Machine Manufacturer, we source the best materials to build highly efficient plastic moulding machines. Our machines are mainly used in automotive, mechanical, food and beverages, aerospace and other industries. Due to their application, these machines are built to be rugged, robust and durable even when used constantly.

We use the latest technology to operate our machines making them the most energy efficient and fully automatic high speed machines. A dedicated team of engineers and researchers are constantly working to improvise the machines and make them future ready. With optimum performance and unmatched durability, MK5 has created a space for itself in the Indian market. With a fair share of international clients, we envision to change the way how plastic parts are delivered and manufactured. We desire to make our unparalleled quality and pricing available to clients around the world becoming a global brand.



400+
CLIENT BASE



50+
STAFF



20+
PRODUCTS

TECHNICAL SPECIFICATION

INJECTION UNIT		UC-400-PVC	UC-600-PVC	UC-850-PVC	UC-1500-PVC	UC-2000-PVC	UC-3000-PVC
INJECTION WEIGHT (GPPS)	GMS	328	468	643	1182	1574	2417
THEORETICAL DISPLACEMENT	CC	346	493	677	1244	1657	2545
SCREW L/D RATIO		19	18	19	20	20	20
SHOT SIZE (THERORETICAL)	MM	275	305	285	375	375	400
SCREW DIAMETER	MM	40	45	55	65	75	90
INJECTION PRESSURE	PSI	1800	1500	2000	2000	2000	2000
SCREW SPEED	RPM	200	160	160	125	120	125
NO.OF PYROMETERS (BARREL+NOZZLE)		4+1	4+1	4+1	5+1	6+1	6+1
TOTAL HEAT CAPACITY	KW	7.8	7.8	7.8	10.5	14.1	15.1

CLAMP UNIT							
RAM STROKE	MM	600	700	800	850	900	950
CLAMP FORC	PSI	1800	1800	2000	2000	2000	2500
TABLE BETWEEN LENGTH	MM	1000	1040	1260	1370	1360	1465
MAX MOLD HEIGHT	MM	425	400	450	480	575	600
MIN MOLD HEIGHT	MM	100	125	150	125	125	100
EJECTOR STROKE	MM	50	50	50	50	50	50
EJECTOR FORCE	PSI	1500	1500	1500	1500	1500	1500

GENERAL							
MAX PUMP PRESSURE	BAR	160	160	160	160	160	160
TOTAL OIL CAPACITY	LTR	200	210	225	300	300	350
ELECTRIC MOTOR	KW	8.6	8.6	11.6	18.2	23	28.7
TOTAL CONNECTION LOAD	KW	16.4	16.4	19.4	28.7	37.1	43.8
MACHINE DIMENSION (L X W X H)	IN	99 X 60 X 139	87 X 56 X 132	87 X 56 X 144	102 X 51 X 180	130 X 65 X 200	135 X 72 X 225
MACHINE WEIGHT *	KG	2100	2500	2800	3500	3800	4800

STANDARD SCOPE AND SPECIFICATION

Injection Unit

- Two drive cylinder for the screw injection
- Multi-stage injection speed, pressure and position
- Multi-stage holding pressure, time and position"
- Controlled transfer position of injection to hold on
- Monitored starting and end injection position
- Suck back pre and post plasticizing
- Self-purging function
- Plasticizing by high torque hydro-motor
- Barrel temperature PID controlled
- Cold start protection
- Special designed screw for PVC processing
- Blower on barrel zone

Clamping Unit

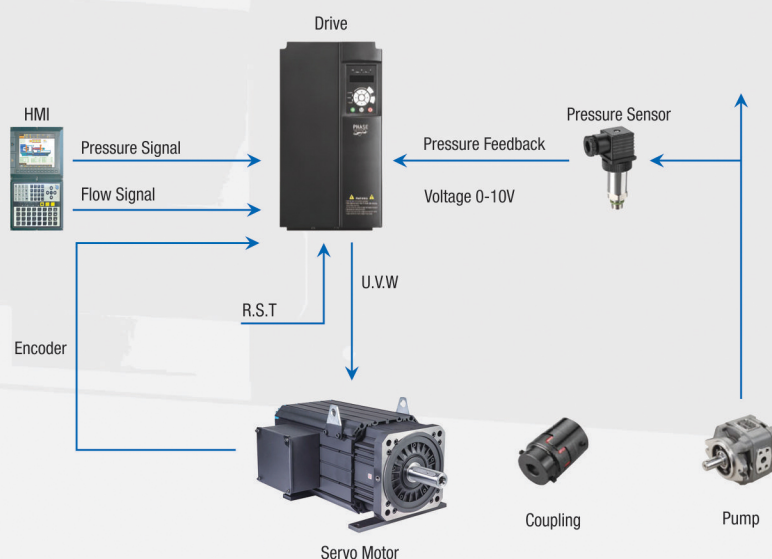
- Ram cylinder for mould closing system
- Multi-stage control of pressure, speed, and position of mould open/close & ejection
- Cooling water manifold for mould cooling
- Hydraulic injector system
- Chrome Plated Ram & Tie Rods
- Mould clamping system in pressure switch with position
- Proportional speed control with 3 closing & 3 opening speed

Hydraulic Unit

- Efficient servo motor
- Dynamic gear pump
- Oil temperature alarm
- Hydraulic oil cooler
- Hydraulic valve on / off indication with LED
- Continuous oil filtration with 10 micron filter

Controller

- Real-time Information - Understanding the product status or machine via smart phone, tablet and pc
- Data Analysis - Improving the quality and efficiency of production by state recors and report analysis
- Authority Management - The use of different levels of management authority
- Chart Analysis - Simple chart analysis
- Language - English are available
- HMI - 8" LCD display



Machine Controller Comprises of High Technology System

Modernization with Smart Technology

Vertical Semi Auto Plastic Injection Moulding Machine



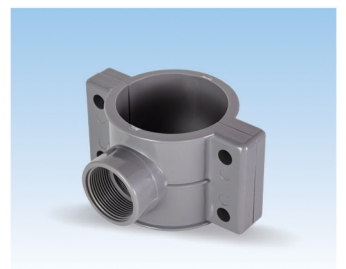
Features :

- Shot weight Consistency.
- Precision.
- Energy efficiency.
- Reliability of Operation.
- Productivity.
- Repeatability.
- HMI 8" LCD Display.





Application





Mfg. by:

KASHYAP

— INDUSTRIES —



B/53, Bileshwar Industrial Estate,
Opp. G.V.M.M, S.P Ring Road Circle,
Odhav, Ahmedabad – 382415



+91 9879504048
+91 9974010321
+91 9638990197



sales@mk5.in



www.mk5.in

mk5 india

