

www.mk5.in

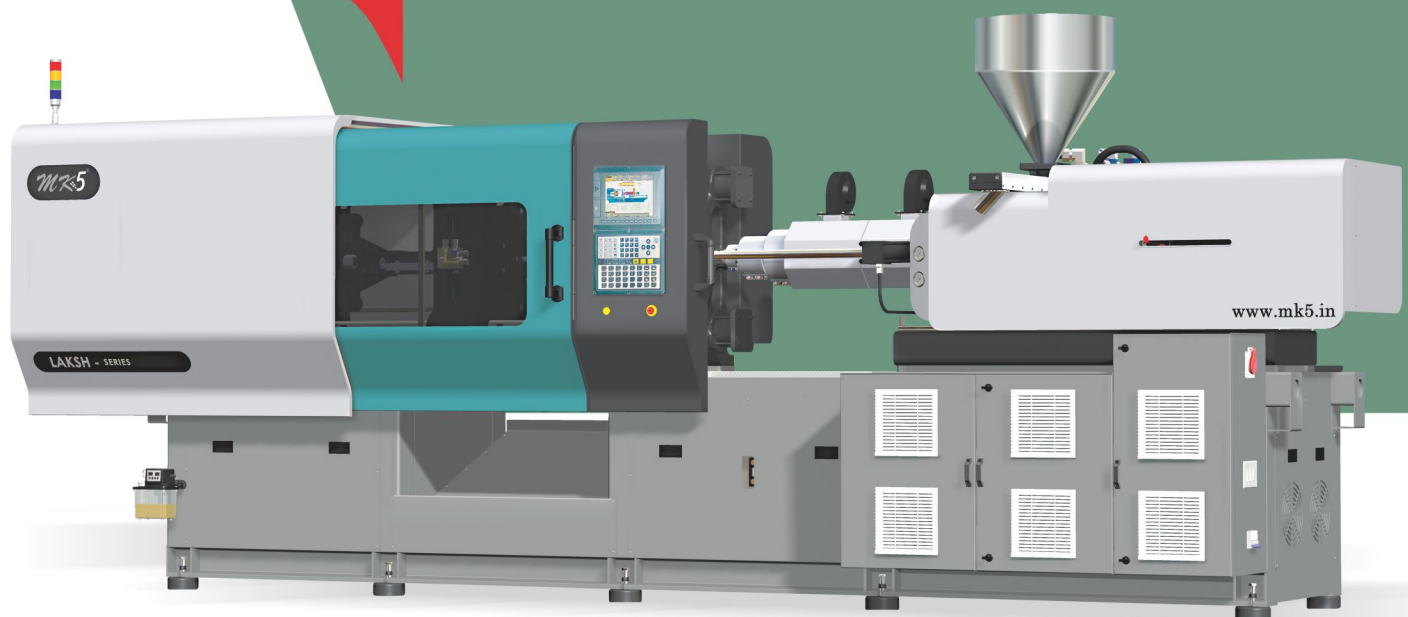


**Excellence.....**  
**in technology and quality**

**LAKSH**  
SERIES PVC

120-350 Ton

PVC



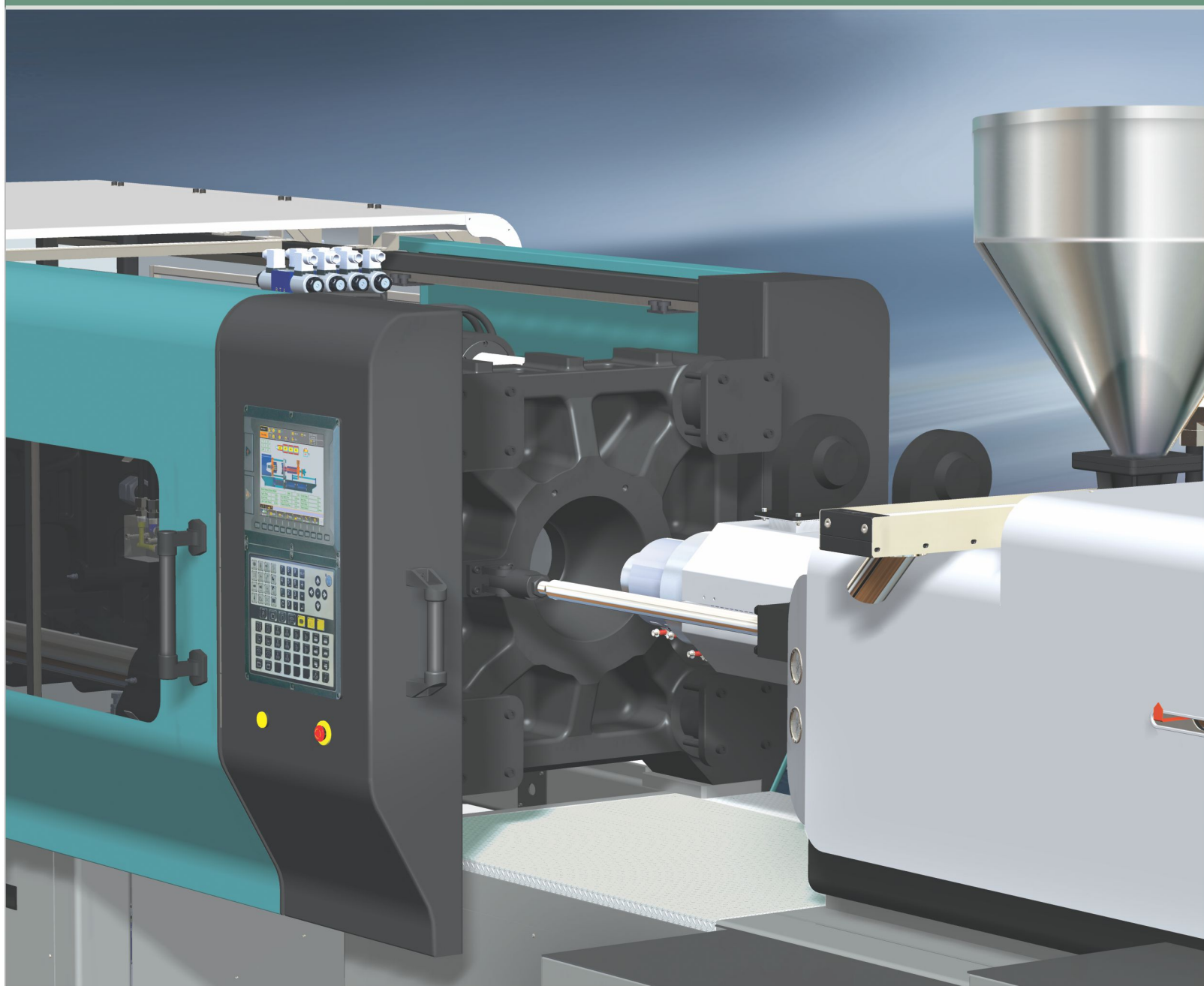
Horizontal  
**Toggle Injection Moulding Machine**





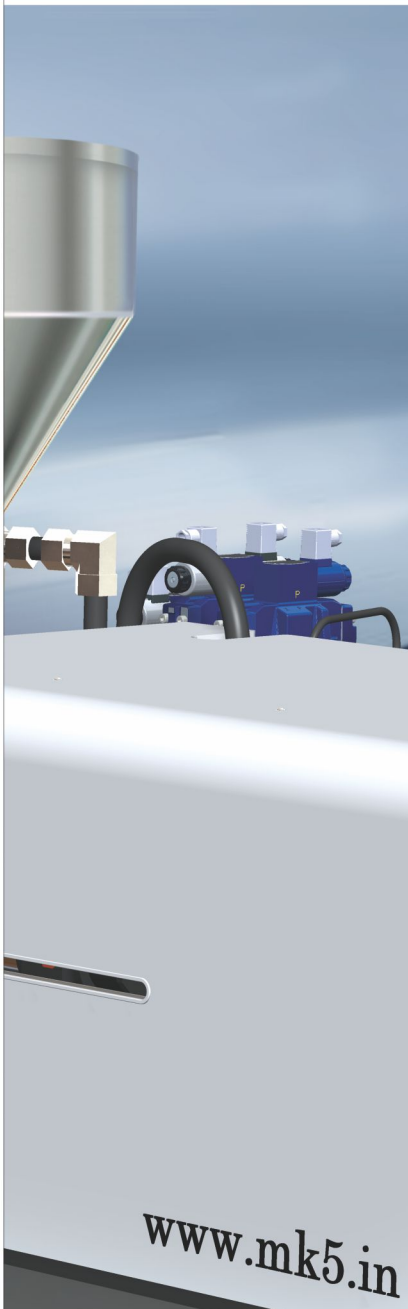
SINCE 2005

w w w . m k 5 . i n



THE REVOLUTION CONTINUES





## Company Profile

Kashyap Industries entered the Indian market in the year 2005. With our headquarters in Ahmedabad, Gujarat, we have spread our wings since we entered and become a trusted name in the Plastic Injection Moulding Machines industry.

Our state of the art facility is spread over a large area and fully equipped to manufacture a wide range of machines. These machines are sold under our Brand Name 'MK5'. Here we not only manufacture but also design, research and test the machines for various parameters like performance, safety, speed, energy consumptions and so on.

As the leading Plastic Injection Moulding Machine Manufacturer, we source the best materials to build highly efficient plastic moulding machines. Our machines are mainly used in automotive, mechanical, food and beverages, aerospace and other industries. Due to their application, these machines are built to be rugged, robust and durable even when used constantly.

We use the latest technology to operate our machines making them the most energy efficient and fully automatic high speed machines. A dedicated team of engineers and researchers are constantly working to improvise the machines and make them future ready. With optimum performance and unmatched durability, MK5 has created a space for itself in the Indian market. With a fair share of international clients, we envision to change the way how plastic parts are delivered and manufactured. We desire to make our unparalleled quality and pricing available to clients around the world becoming a global brand.



**400+**  
CLIENT BASE



**50+**  
STAFF



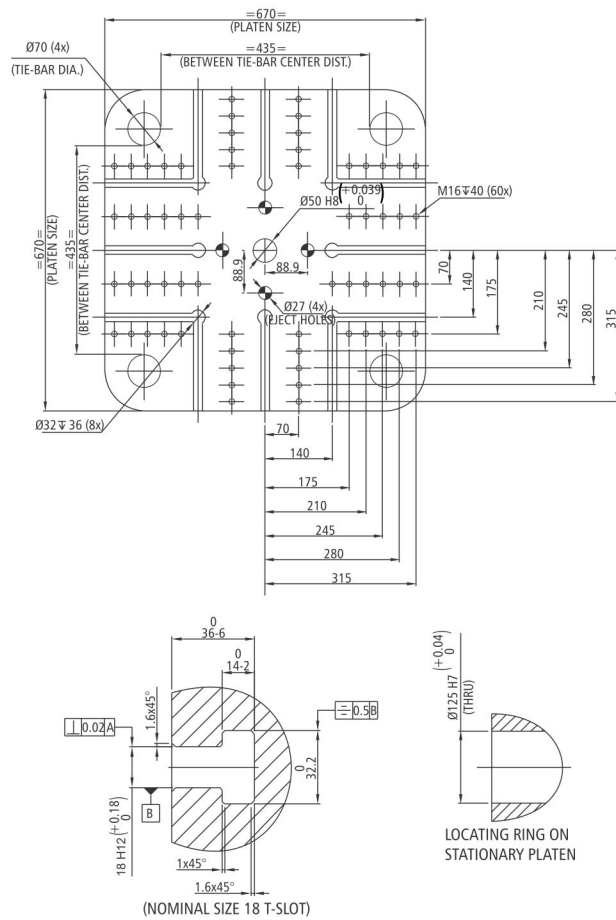
**20+**  
PRODUCTS



# LAKSH 120

## SERIES PVC

www.mk5.in



### NOTE :

- All dimensions are in mm.
- Thread & t-slot dimensions are as per euromap standard.
- T-slot & thread center dist. Are typical in four quadrants.
- Eject center dist. Are typical in four quadrants.

### TECHNICAL SPECIFICATION

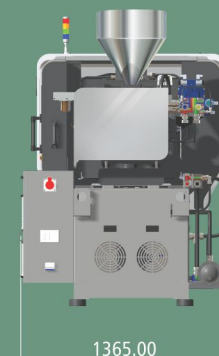
INJECTION UNIT		AS-180		
		A	B	C
INJECTION CAPACITY MAX. (GPPS)	GMS	378	466	564
THEORETICAL DISPLACEMENT	CC	398	491	594
INJECTION PRESSURE MAX.	BAR	2702	2189	1809
INJECTION RATE	CC / SEC	135	167	202
INJECTION SCREW STROKE	MM	250	250	250
SCREW DIAMETER	MM	45	50	55
SCRE L/D RATIO		24.44	22	20
SCREW SPEED	RPM	133	133	133
SCREW TORQUE	NM	1095		
PLASTICIZING RATE (GPPS)	GM / SEC	25	33	42
NO. OF PYROMETERS (BARREL+NOZZLE)		5+1		
TOTAL HEAT CAPACITY	KW	11		

CLAMP UNIT		
CLAMP FORCE	TON	120
CLAMP STROKE	MM	380
MAXIMUM DAYLIGHT	MM	880
MINIMUM MOULD HEIGHT	MM	150
MAXIMUM MOULD HEIGHT	MM	500
PLATEN SIZE (H X V)	MM	670 X 670
DISTANCE BETWEEN TIE ROD	MM	435 X 435
TIE ROD DIAMETER	MM	70
EJECTOR STROKER	MM	130
EJECTOR FORCE	TON	3.5
MOULD WEIGHT CAPACITY (STATE./MOVING)	KG	350 / 700

GENERAL		
ELECTRIC MOTOR	KW	15
TOTAL OIL CAPACITY	LTR.	252
WATER REQUIREMENT (INLET TEMP.29 C)	LPM	50
TOTAL CONNECTED LOAD	KW	26
MACHINE DIMENSION (L x W x H)	MM	4400 X 1365 X 2000
MACHINE WEIGHT	KG	5550





# LAKSH 180

## SERIES PVC

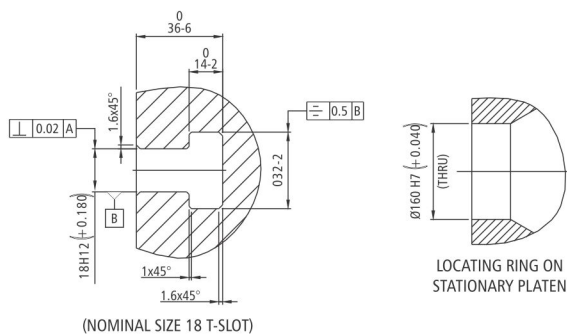
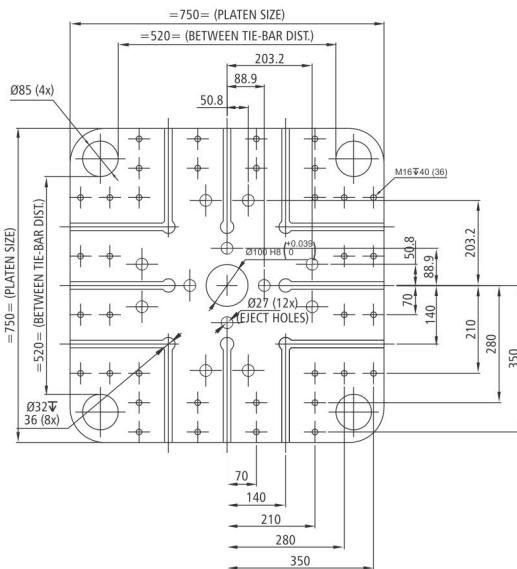


### TECHNICAL SPECIFICATION

INJECTION UNIT		AS-180			AS-230		
		A	B	C	A	B	C
INJECTION CAPACITY MAX. (GPPS)	GMS	378	466	564	632	883	1024
THEORETICAL DISPLACEMENT	CC	398	491	594	665	929	1078
INJECTION PRESSURE MAX.	BAR	2702	2189	1809	2311	1655	1427
INJECTION RATE	CC / SEC	135	167	202	215	256	296
INJECTION SCREW STROKE	MM	250	250	250	280	280	280
SCREW DIAMETER	MM	45	50	55	55	65	70
SCRE L/D RATIO		24.44	22	20	20	22	20.43
SCREW SPEED	RPM	208	208	208	208	208	208
SCREW TORQUE	NM	1095			1860		
PLASTICIZING RATE (GPPS)	GM / SEC	25	33	42	29	43	57
NO. OF PYROMETERS (BARREL+NOZZLE)		5+1			4+2		
TOTAL HEAT CAPACITY	KW	11			13.5		

CLAMP UNIT			
CLAMP FORCE	TON	180	180
CLAMP STROKE	MM	460	460
MAXIMUM DAYLIGHT	MM	990	990
MINIMUM MOULD HEIGHT	MM	200	200
MAXIMUM MOULD HEIGHT	MM	550	550
PLATEN SIZE (H X V)	MM	750 X 750	750 X 750
DISTANCE BETWEEN TIE ROD	MM	520 X 520	520 X 520
TIE ROD DIAMETER	MM	85	85
EJECTOR STROKER	MM	160	160
EJECTOR FORCE	TON	5	5
MOULD WEIGHT CAPACITY (STATE./MOVING)	KG	500 / 1000	500 / 1000

GENERAL			
ELECTRIC MOTOR	KW	25	25
TOTAL OIL CAPACITY	LTR.	366	366
WATER REQUIREMENT (INLET TEMP.29 C)	LPM	50	50
TOTAL CONNECTED LOAD	KW	36	38.5
MACHINE DIMENSION (L x W x H)	MM	6100 X 1485 X 2240	6100 X 1485 X 2240
MACHINE WEIGHT	KG	7600	8000



#### NOTE :

- All dimensions are in mm.
- Thread & t-slot dimensions are as per euromap standard.
- T-slot & thread center dist. Are typical in four quadrants.
- Eject center dist. Are typical in four quadrants.





# LAKSH 230

## SERIES PVC

www.mk5.in

### TECHNICAL SPECIFICATION

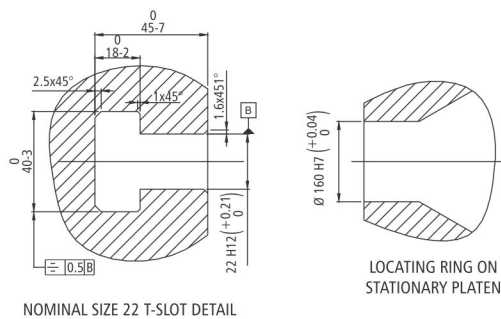
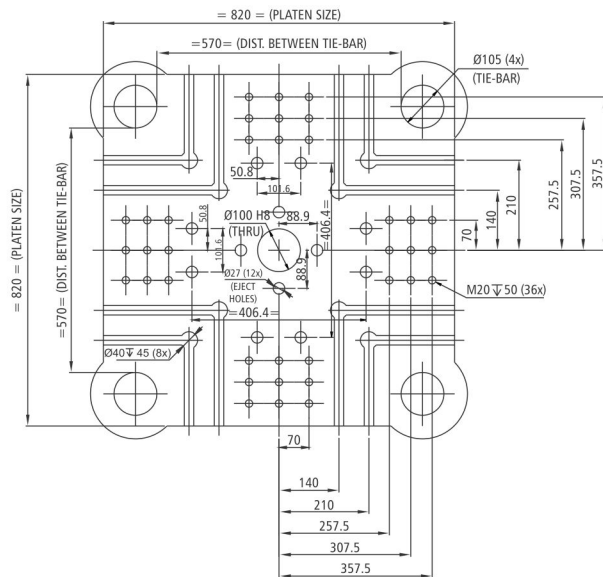
INJECTION UNIT		AS-230		
		A	B	C
INJECTION CAPACITY MAX. (GPPS)	GMS	632	883	1024
THEORETICAL DISPLACEMENT	CC	665	929	1078
INJECTION PRESSURE MAX.	BAR	2311	1655	1427
INJECTION RATE	CC / SEC	215	256	296
INJECTION SCREW STROKE	MM	280	280	280
SCREW DIAMETER	MM	55	65	70
SCRE L/D RATIO		20	22	20.43
SCREW SPEED	RPM	267	267	267
SCREW TORQUE	NM	1860		
PLASTICIZING RATE (GPPS)	GM / SEC	29	43	57
NO. OF PYROMETERS (BARREL+NOZZLE)		4+2		
TOTAL HEAT CAPACITY	KW	13.5		

CLAMP UNIT		
CLAMP FORCE	TON	230
CLAMP STROKE	MM	550
MAXIMUM DAYLIGHT	MM	1270
MINIMUM MOULD HEIGHT	MM	200
MAXIMUM MOULD HEIGHT	MM	720
PLATEN SIZE (H X V)	MM	860 X 860
DISTANCE BETWEEN TIE ROD	MM	570 X 570
TIE ROD DIAMETER	MM	105
EJECTOR STROKER	MM	160
EJECTOR FORCE	TON	6
MOULD WEIGHT CAPACITY (STATE./MOVING)	KG	667 / 1333

GENERAL		
ELECTRIC MOTOR	KW	30
TOTAL OIL CAPACITY	LTR.	400
WATER REQUIREMENT (INLET TEMP.29 C)	LPM	75
TOTAL CONNECTED LOAD	KW	43.5
MACHINE DIMENSION (L x W x H)	MM	6500 X 1750 X 2400
MACHINE WEIGHT	KG	10000



#### NOTE :

- All dimensions are in mm.
- Thread & t-slot dimensions are as per euromap standard.
- T-slot & thread center dist. Are typical in four quadrants.
- Eject center dist. Are typical in four quadrants.





# LAKSH 275

## SERIES PVC

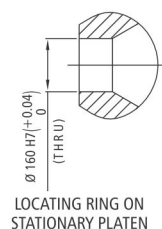
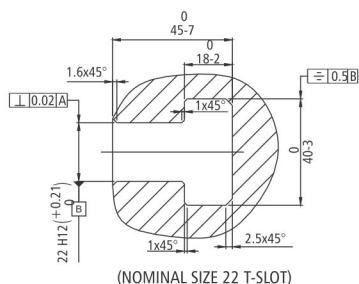
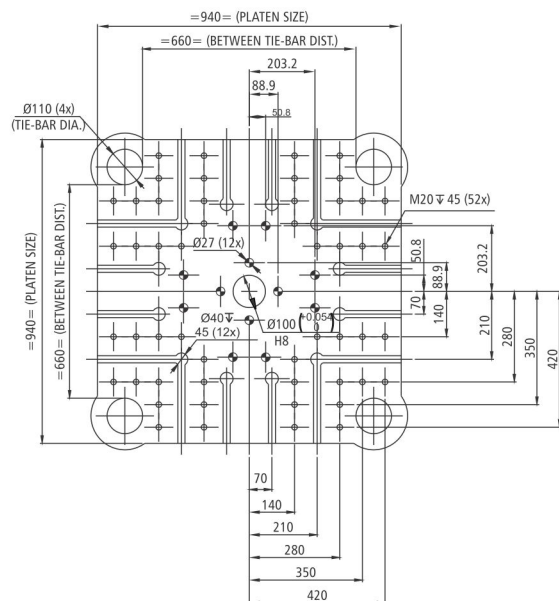


### TECHNICAL SPECIFICATION

INJECTION UNIT		AS-230			AS-275		
		A	B	C	A	B	C
INJECTION CAPACITY MAX. (GPPS)	GMS	632	883	1024	1316	1511	1719
THEORETICAL DISPLACEMENT	CC	665	929	1078	1385	1590	1810
INJECTION PRESSURE MAX.	BAR	2311	1655	1427	1807	1574	1384
INJECTION RATE	CC / SEC	215	256	296	330	431	545
INJECTION SCREW STROKE	MM	280	280	280	360	360	360
SCREW DIAMETER	MM	55	65	70	70	75	80
SCRE L/D RATIO		20	22	20.43	22.9	20	17.8
SCREW SPEED	RPM	300	300	300	300	300	300
SCREW TORQUE	NM	1860			4392		
PLASTICIZING RATE (GPPS)	GM / SEC	29	43	57	52	71	92
NO. OF PYROMETERS (BARREL+NOZZLE)		4+2			5+2		
TOTAL HEAT CAPACITY	KW	13.5			16.5		

CLAMP UNIT			
CLAMP FORCE	TON	275	275
CLAMP STROKE	MM	620	620
MAXIMUM DAYLIGHT	MM	1420	1420
MINIMUM MOULD HEIGHT	MM	200	200
MAXIMUM MOULD HEIGHT	MM	800	800
PLATEN SIZE (H X V)	MM	940 X 940	940 X 940
DISTANCE BETWEEN TIE ROD	MM	660 X 660	660 X 660
TIE ROD DIAMETER	MM	110	110
EJECTOR STROKER	MM	200	200
EJECTOR FORCE	TON	8	8
MOULD WEIGHT CAPACITY (STATE./MOVING)	KG	934 / 1866	934 / 1866

GENERAL			
ELECTRIC MOTOR	KW	36	36
TOTAL OIL CAPACITY	LTR.	600	600
WATER REQUIREMENT (INLET TEMP.29 C)	LPM	100	100
TOTAL CONNECTED LOAD	KW	49.5	52.5
MACHINE DIMENSION (L x W x H)	MM	7500 X 1765 X 2375	7500 X 1765 X 2375
MACHINE WEIGHT	KG	12200	13500



#### NOTE :

- All dimensions are in mm.
- Thread & t-slot dimensions are as per euromap standard.
- T-slot & thread center dist. Are typical in four quadrants.
- Eject center dist. Are typical in four quadrants.





# LAKSH 350

## SERIES PVC

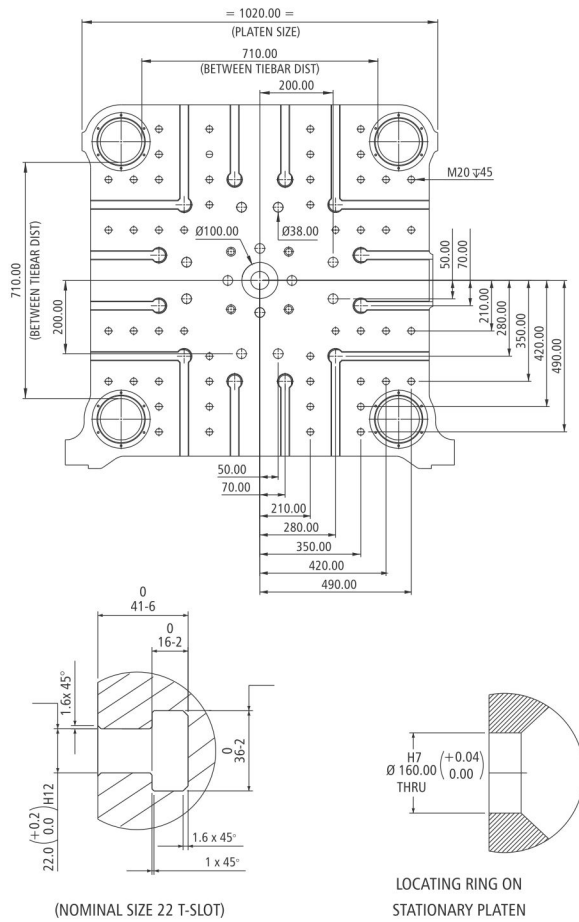
www.mk5.in

### TECHNICAL SPECIFICATION

INJECTION UNIT		AS-350		
		A	B	C
INJECTION CAPACITY MAX. (GPPS)	GMS	1316	1719	2176
THEORETICAL DISPLACEMENT	CC	1385	1810	2290
INJECTION PRESSURE MAX.	BAR	1807	1384	1093
INJECTION RATE	CC / SEC	330	431	545
INJECTION SCREW STROKE	MM	333	333	333
SCREW DIAMETER	MM	70	80	90
SCRE L/D RATIO		22.9	20	17.8
SCREW SPEED	RPM	146	146	146
SCREW TORQUE	NM	4392		
PLASTICIZING RATE (GPPS)	GM / SEC	52	71	92
NO. OF PYROMETERS (BARREL+NOZZLE)		7+2		
TOTAL HEAT CAPACITY	KW	16.5		

CLAMP UNIT		
CLAMP FORCE	TON	350
CLAMP STROKE	MM	670
MAXIMUM DAYLIGHT	MM	1420
MINIMUM MOULD HEIGHT	MM	250
MAXIMUM MOULD HEIGHT	MM	750
PLATEN SIZE (H X V)	MM	1065 X 1065
DISTANCE BETWEEN TIE ROD	MM	710 X 710
TIE ROD DIAMETER	MM	115
EJECTOR STROKER	MM	160
EJECTOR FORCE	TON	8
MOULD WEIGHT CAPACITY (STATE./MOVING)	KG	934 / 1866

GENERAL		
ELECTRIC MOTOR	KW	39
TOTAL OIL CAPACITY	LTR.	600
WATER REQUIREMENT (INLET TEMP.29 C)	LPM	100
TOTAL CONNECTED LOAD	KW	55.5
MACHINE DIMENSION (L x W x H)	MM	7900 X 2700 X 2600
MACHINE WEIGHT	KG	14000



#### NOTE :

- All dimensions are in mm.
- Thread & t-slot dimensions are as per euromap standard.
- T-slot & thread center dist. Are typical in four quadrants.
- Eject center dist. Are typical in four quadrants.





## Horizontal Toggle Injection Moulding Machine



Energy-Saving  
Technology





## STANDARD SCOPE AND SPECIFICATION

### Injection Unit

- Special Designed Screw for PVC Processing
- Blower on Barrel Zone
- Injection Unit on Corrosion Resistant LM Guides
- Two drive cylinder for the screw injection
- Multi-stage injection speed, pressure and position"
- Multi-stage holding pressure, time and position"
- Controlled transfer position of injection to hold on
- Monitored starting and end injection position
- Suck back pre and post plasticizing
- Self-purging function
- Plasticizing by high torque hydro-motor
- Barrel temperature PID controlled
- Cold start protection

### Clamping Unit

- 5 - point double toggle with excellent kinematics to offer smooth movement of moving platen
- Mechanical, electrical and hydraulic safety gate interlock
- Low pressure and safety
- Multi-stage control of pressure, speed, and position of mould open / close & ejection
- Cooling water manifold for mould cooling
- Hydraulic core pull
- Auto lubrication in clamp unit
- T-Slot Platens with Tapped Holes

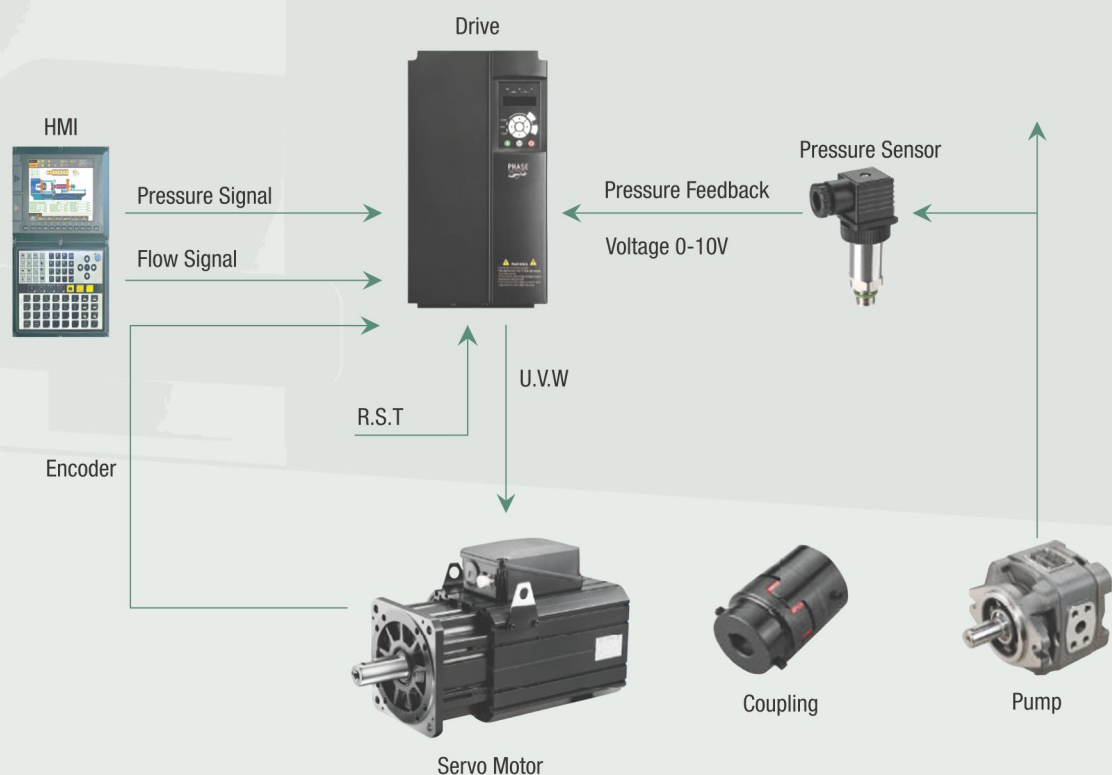
### Hydraulic Unit

- Efficient servo motor
- Dynamic gear pump
- Oil temperature alarm
- Oil level gauge
- Hydraulic oil cooler
- Hydraulic valve on / off indication with LED
- Continuous oil filtration with 10 micron filter

### Controller

- Real-time Information - Understanding the product status or machine via smart phone, tablet and pc
- Data Analysis - Improving the quality and efficiency of production by state record and report analysis
- Authority Management - The use of different levels of management authority
- Chart Analysis - Simple chart analysis
- Language - English are available
- HMI - 10.4" LCD display

**Machine Controller Comprises of High Technology System**







Superior Technology  
Superior Performance


## Application








Mfg. by:  
**KASHYAP**  
— INDUSTRIES —

 B/53, Bileshwar Industrial Estate,  
Opp. G.V.M.M, S.P Ring Road Circle,  
Odhav, Ahmedabad – 382415

 +91 9879504048  
+91 9974010321  
+91 9638990197

 [sales@mk5.in](mailto:sales@mk5.in)

 [www.mk5.in](http://www.mk5.in)

mk5 machine

